



Cordless Grass Trimmer UR012G

Accessories

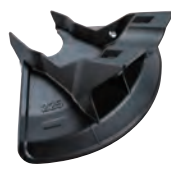
Chisel blade

Part No. 199872-9
Blade dia.: 225mm



Protector 225 set MG

Part No. 199873-7



Shredder blade

Part No. 199874-5
Blade dia.: 270mm



Protector set MG

Part No. 199875-3



Trimmer head

Part No. 196324-1
Cord/Line : 2.4mm x3.6m
Ref. : UN-74L



Part No. 197296-3
Cord/Line : 2.0mm x3m
Ref. : ECO 4L



Part No. 199884-2
Cord/Line : 2.7mm
Ref. : 105-M10L



Part No. 191D93-3
Cord/Line : 2.4mm
Ref. : 121-M10L



Part No. 191D89-4
Cord/Line : 2.0mm x4m
Ref. : 96-M10L



Part No. 198893-8 (EU)
Cord/Line : 2.0mm x3m
Ref. : 95-M10L



Part No. 198266-5
Cord/Line : 2.4mm x6m
Ref. : UN-72L

Part No. 199885-0
Cord/Line : 2.0mm
Ref. : 105-M10L

Part No. 191D91-9
Cord/Line : 2.4mm x3m
Ref. : 96-M10L

Part No. 191D91-9
Cord/Line : 2.4mm x3m
Ref. : 96-M10L

Part No. 191D91-9
Cord/Line : 2.4mm x3m
Ref. : 96-M10L

Part No. 191D91-9
Cord/Line : 2.4mm x3m
Ref. : 96-M10L

Four-leaf Spiral Nylon cord

Green	Orange	Red
Size	Size	Size
2.0mmx15m	2.4mmx15m	2.7mmx15m
2.0mmx30m	2.4mmx30m	2.4mmx30m
2.0mmx160m	2.4mmx120m	2.4mmx180m
2.0mmx280m	2.4mmx180m	

Protection guard for brush cutting blades

Part No. 191B54-1



Brushcutter blade

Blade dia	2-tooth blade	3-tooth blade	4-tooth blade	Plastic blade	Replacement plastic blade
255mm	198345-9	195299-1	196895-8	198383-1	198426-9
305mm	195624-6	195300-2	-	199868-0	199870-3

Shoulder strap assembly

Comfort
Part No.122A37-4



Charging Time

	DC40RA Fast Charging	DC40RC
BL4020 2.0Ah	22 min	30 min
BL4025 2.5Ah	28 min	38 min
BL4040 4.0Ah	45 min	67 min
*1BL4050F 5.0Ah	50 min	85 min

*1 Recommended battery

Cordless Grass Trimmer

UR012G

Variable Speed	Cutting Width	Metal Blade: 305 mm (12") Chisel Blade: 225 mm (8-7/8") Nylon Cutting Head: 480 mm (18-7/8") Shredder Blade: 270 mm (10-5/8") Plastic Blade: 305 mm (12")
Brake	No Load Speed (RPM)	Metal Blade (3 / 2 / 1): 0 - 6,800 / 0 - 5,000 / 0 - 3,500 Nylon Cutting Head (3 / 2 / 1): 0 - 5,000 / 0 - 4,200 / 0 - 3,500
Reversing	Spindle Size	M10 x 1.25 LH
Electronic 3-Speed	Sound Pressure Level	4-Tooth Blade: 84.3 dB(A) / Plastic Blade: 82.9 dB(A) / Nylon Cutting Head: 79.9 dB(A)
Constant Speed	Sound Power Level	4-Tooth Blade: 97.9 dB(A) / Plastic Blade: 92.4 dB(A) / Nylon Cutting Head: 91.6 dB(A)
Soft Start	Vibration Level	Left / Right: 2.5 / 2.5 m/s ² or less
	Dimensions (L x W x H)	w/ BL4050F: 1,829 x 680 x 590 mm (72 x 26-3/4 x 23-1/4")
	Net Weight	8.0 - 9.3 kg (17.6 - 20.5 lbs.)

Standard Equipment : Safety Goggles, Metal Blade / Nylon Cutting Head / Plastic Blade (country-specific), Blade Cover (for the product with metal blade), Accessory Bag, Hex Wrench, Box Wrench, Shoulder Belt, Battery, Charger

The weight may differ depending on the attachment(s), including the battery cartridge. The lightest and heaviest combination, according to EPTA-Procedure 01/2014, are shown in the table. Items of standard equipment and specifications may vary by country or area.

Makita Corporation

3-11-8 Sumiyoshi-cho, Anjo, Aichi, 446-8502 Japan

PRINTED IN JAPAN 202108



As powerful as 40mL petrol grass trimmer



Wet Guard

Max Output
2.0 kW





High power and large cutting width of 480mm similar to 40mL class engine grass trimmers



Compatible with a variety of blades

Metal blade	ø305mm
Plastic blade	ø305mm
TCT saw blade	ø255mm
Chisel blade (A specially designed protector is necessary.)	ø255mm
Nylon cutting head (The cutting cord is ø2.7mm quiet type.)	ø480mm
Shredder blade (A specially designed protector is necessary.)	ø270mm

Chisel blade 225 set MG

For brush and thin tree trunks and new growth. Not available in some countries due to local regulation

Part No. 199872-9

Protector 225 set MG

Part No. 199873-7



Shredder blade 270 set MG

for thick grass, scrub and vines

Part No. 199874-5

Protector set MG

Part No. 199875-3



Multi functional control panel: near right hand position for easy access and operation



Reverse button



Reverse switch for clearing entangled weeds and grass from cutting head

Low noise level

96 or lower dB(A)
with ø480mm nylon cutting head

Max Output
2.0 kW

Toolless handle lock mechanism for good portability

Large push button main power switch allows for easy on/off even with gloved hand.

New tool-less quick fastening handle holder

Rigid ø28mm shaft pipe is used for heavy-duty operation using Chisel blades or Shredder blades.

The vertical center line of the handle bar always stays aligned with that of user



- Enabling user to work with less fatigue even in long continuous operation.
- Allowing for a wider swing.

Run Time (BL4050F x2)*			
Metal blade	High	Med	Low
	85 / 135 / 249 min		
Nylon cutting head	High	Med	Low
	22 / 42 / 106 min		

*on a single full battery charge / No load



High water-resistance allows to operate the machine even if it is wet with water.



eXtreme Protection Technology
Enhanced Dust and Drip-proof Performance ensure reliable operation even under bad weather

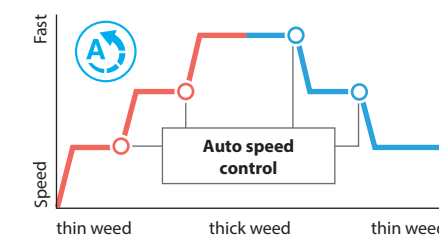


Rear end mounted motor
Makes the tool weight balance similar to engine grass trimmers, enabling user to easily lift up the saw head for ridge weed removal, etc.



Automatic torque Drive Technology

Automatically changes the cutting speed according to grass density.



Active Feedback sensing Technology

Torque limiter turns the motor off if the tool is suddenly forced to lock

