

TABLE OF CONTENTS

TILLER ASSEMBLY INSTRUCTIONS	3
BREAK IN PROCEDURE	3
SERVICE INFORMATION	4
BARRETO WARRANTY	5
HOUR METER	5
HONDA GX270 SCHEMATIC	6
SUBARU EX27 SCHEMATIC	7
HYDRAULIC SCHEMATIC	8
SPECIFICATIONS	9
TROUBLESHOOTING	10
LUBRICATING INSTRUCTIONS	12
OPERATING INSTRUCTIONS	13
SAFETY INSTRUCTIONS	14
SAFETY INSTRUCTIONS OVERVIEW	15
LOCATING UNDERGROUND UTILITIES	17
WORKSITE ASSESSMENT	18
CONTACT WITH UNDERGROUND UTILITIES	19
INDEX	20

ASSEMBLY INSTRUCTIONS

1. Remove the tiller from shipping crate. Please inspect immediately for any damage and notify the shipping company and Barreto Manufacturing, Inc. right away if any is found.
2. Screw the handle bar adjustment crank into the lower handle bar adjuster pin.
3. Fasten the handle bar to the tiller using the 1/2" x 3" bolt supplied.
4. Arrange the hoses down the handle bar tube and fasten to the tube with tie wraps provided.
5. Adjust clutch cable by removing all slack in the lever.
6. Check reservoir according to instructions in service information on the following page.
7. Fill the engine with fuel and oil according to the engine manual.
8. Free wheel hubs: Pull one freewheeling pin slightly, using the split ring. Rotate the pin until the 1/8" diameter roll pin aligns with the slot in the mounting plate. Allow the pin to slide through the slot. Repeat for the other wheel. Roll the tiller until each pin drops into a hole in the hub. The hubs are now locked.
9. Uncoil the wire for the remote engine on/off switch. Route the wire along the clutch cable to the engine and secure with the cable ties provided. Splice this wire to the kill switch wire on the engine with the electrical splice provided.
10. When documentation refers to "right side" or "left side", it is relative to the operator's position with both hands on the handlebars.

BREAK IN PROCEDURE

KEEP ALL PERSONNEL CLEAR OF MACHINE DURING BREAK IN TO PREVENT INJURY!!

Before using tiller, lower the depth bar to raise the tines off the ground. Tape clutch handle in closed position and let the machine run for 30 minutes at half throttle with tines in motion.

SERVICE INFORMATION

1. Check reservoir level using sight glass on the left side of the tank. If required, add to reservoir tractor transmission / hydraulic fluid. For machine use in ambient temperatures between +32°F (0°C) and +90°F (32°C) hydraulic fluid ISO 68 is recommended. If the machine is operated at temperatures below +32°F (0°C) then hydraulic fluid ISO 46 is recommended. Recheck oil level after the tiller has been run and oil has been circulated through the wheel and tine motors. Routinely check level thereafter. **DO NOT OVERFILL THE TANK.**
2. Change the hydraulic oil filter after the first 50 hours of use. Change it after every 200 hours thereafter.
3. Add 1 quart of hydraulic oil to the reservoir with each oil filter change.
4. Check the tine bolts after each use and tighten as needed. Check all hydraulic fittings for leaks and tighten if necessary.
5. Tines should be changed as often as needed for the machine to do a satisfactory and efficient tilling job. Use Loctite stud and bearing adhesive/sealant on tine bolt threads to prevent loosening.
6. The grease zerk on both ends of the tine shaft flange bearing should be greased after every 4 to 8 hours of use.
7. Grease zerks on the wheel hubs should be greased once a week or so, depending upon freewheel use.

IMPORTANT: The engine is normally serviced prior to shipping. However, shipping regulations may prohibit this. Check levels and add oil and fuel as required before starting. Service according to the engine manual before starting.

IMPORTANT: If the couplers between the engine and the pump are moved or removed for any reason, it is CRITICAL that they have a 1/8" gap between them when reinstalled. Failure to have this gap will result in rapid wear and failure of your pump!

NOTE: It is very important to move the fuel shutoff lever to the closed position after stopping the engine. Failure to do so could cause fuel to leak down into the cylinder and crankcase. Damage resulting from this will void your engine warranty and not be covered.

WARNING: Running the tiller without hydraulic oil will cause serious damage to the hydraulic pump. CHECK RESERVOIR LEVEL BEFORE STARTING THE MACHINE.

BARRETO MANUFACTURING, INC. EQUIPMENT WARRANTY

Barreto Manufacturing, Inc. warrants all **BARRETO** equipment to be free of defects in material and workmanship for a period of one (1) year, dating from delivery to the original user.

This Warranty is in lieu of all other warranties, whether written or implied, and is limited to:

1. Replacement of parts returned to the dealer and/or factory and determined defective upon inspection. (Replacement for parts to dealers shall be at dealer cost plus shipping charges.)
2. Time for pick-up and/or delivery, transportation or service calls by dealers is excluded. Manufacturer reserves the right to determine reasonable time required for repair.

Warranty does not apply to damage caused by abuse or neglect. Time and materials required for normal maintenance and service are also excluded from warranty coverage.

Engines, engine accessories, batteries and tires are warranted by the original manufacturers and are not covered by the Barreto Equipment Warranty. Wear parts such as tiller tines, sprockets, bearings, trencher chain parts including teeth, stump grinder cutting teeth & holders, etc. are also excluded unless it can be determined that a defect has contributed to premature wear.

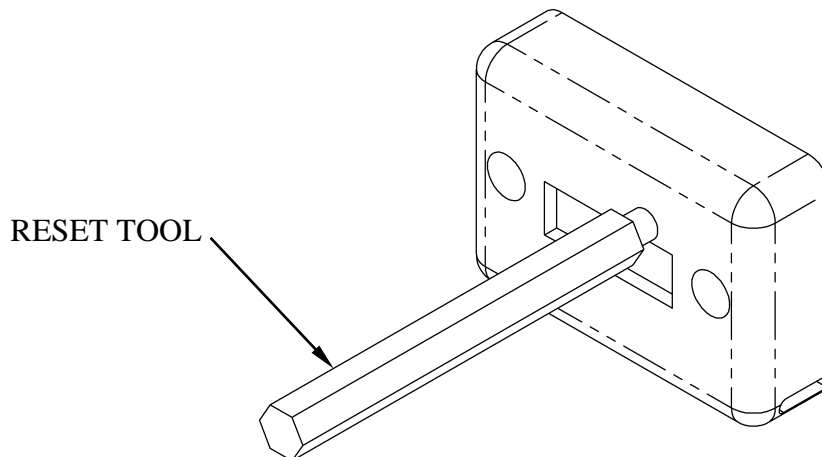
HOUR METER

The **DGI® TACH/HOUR** hour meter tracks the hours of machine operation in order for routine maintenance to be performed on a timely basis.

Your **DGI®** hour meter is pre-set at the **DGI®** factory to go into **Flash Alert** mode at 25-hour intervals. Although the engine manufacturer does not require changing engine oil this often, **due to heavy-duty use and extreme conditions inherent to tiller use, Barreto Manufacturing strongly recommends frequent oil changes.**

Refer to this manual for equipment service requirements and to the **Engine Manual** for engine service requirements.

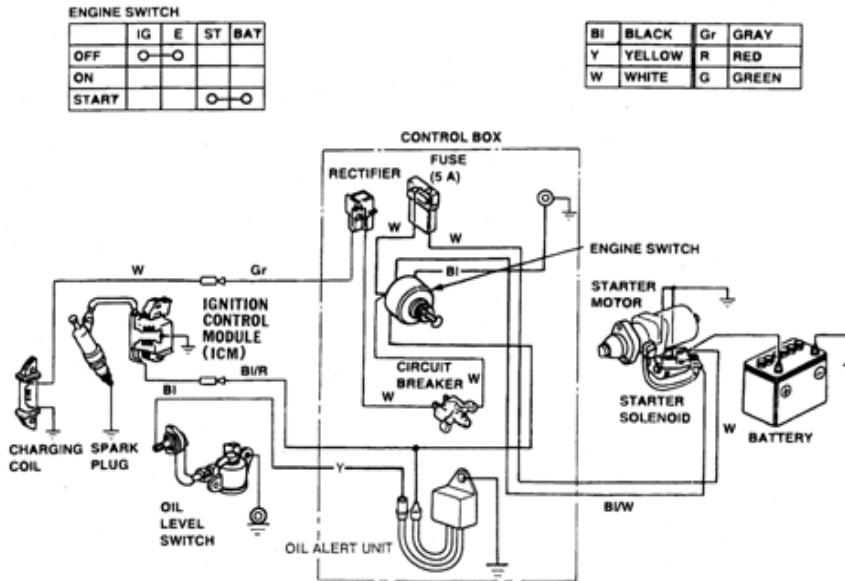
While **Flash Alert** is active, hold the tip of the RESET TOOL (Key Kancel Wand) against the meter as shown. Within several seconds, the display will stop flashing indicating the Service Interval has been reset. If the wand gets lost, a small mechanic's pick-up magnet will work.



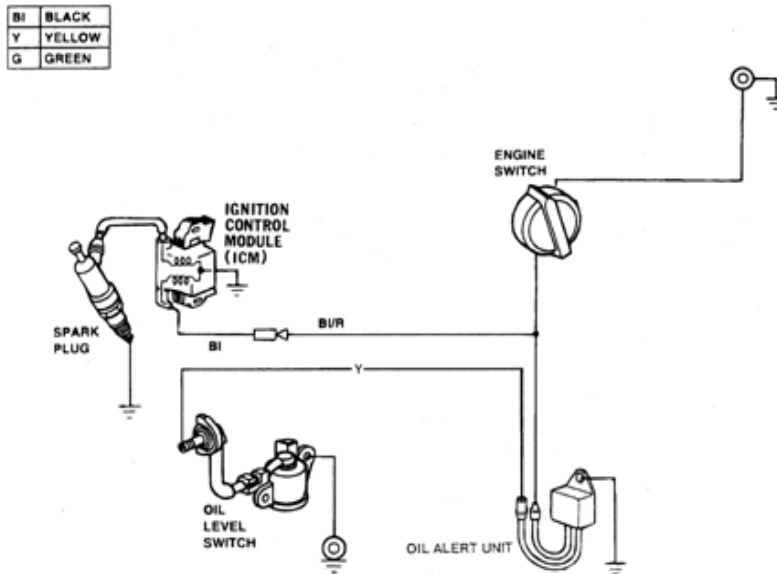
TECHNICAL & CONSUMER INFORMATION

Wiring Diagrams

Oil Alert® and Electric Starter Types



Engine Types With Oil Alert® and Without Electric Starter



ELECTRICAL SCHEMATIC - SUBARU EX27

8. WIRING DIAGRAM

8-1 MODEL WITHOUT ELECTRIC STARTER (Models EX13, 17, 21 and 27)

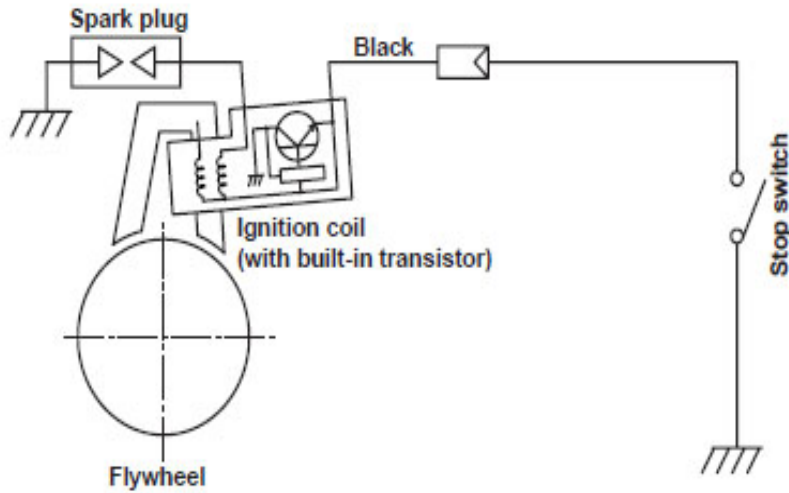
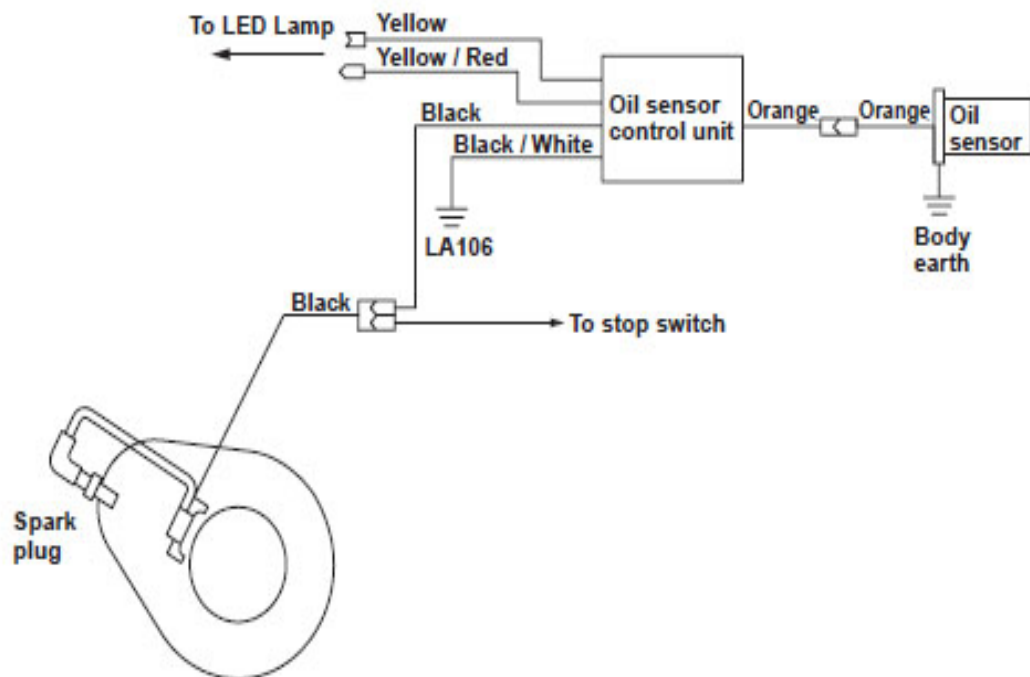
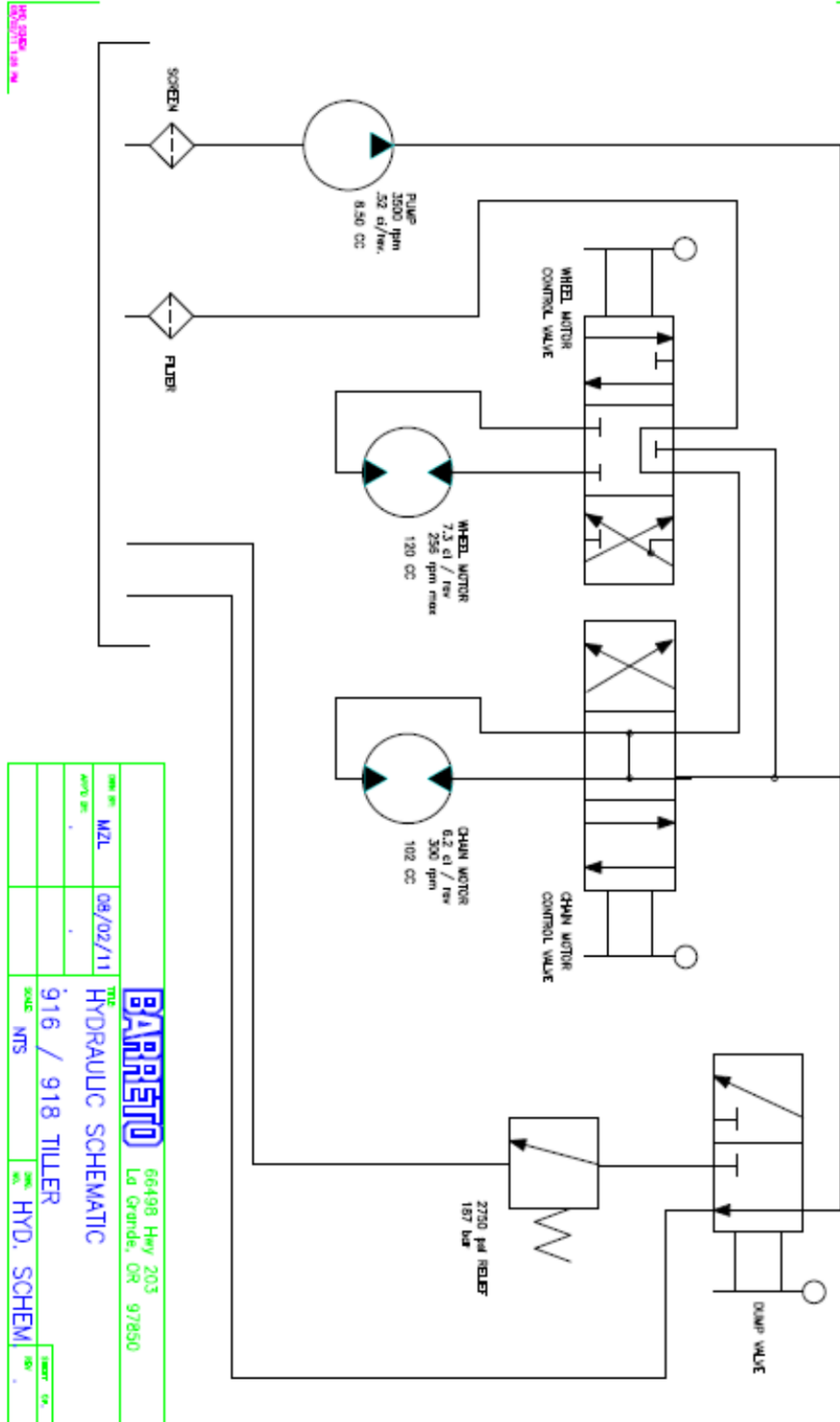


Fig. 8-1

8-4 MODEL WITH OIL SENSOR



HYDRAULIC SCHEMATIC



SPECIFICATIONS

MODEL NUMBER

916/918

DIMENSIONS

Weight

460 lbs. (208.65kg)

Height

36" (0.91m)

Length

66" (1.68m)

Width

20.75" (527.05mm)

ENGINE

Engine Options

Honda GX270

Subaru EX27

FUEL

Gasoline

POWER: hp (kW) at 3600 RPM

H-8.5 hp (6.34 kW)

POWER: hp (kW) at 4000 RPM

S-9 hp (6.6 kW)

FUEL CAPACITY

H-0.95 U.S. gallons (3.6 liters)

S-0.94 U.S. gallons (3.6 liters)

ENGINE OIL CAPACITY

H-.63 quart (.60 liters)

S-.63 quart (.60 liters)

HOUR METER

Standard

HYDRAULIC SYSTEM

Reservoir Capacity

7.8 U.S. gallons (29.53 liters)

OPERATIONS

Ground Drive, Forward

78 feet per minute (23.77 m/min)

Ground Drive, Reverse

78 feet per minute (23.77 m/min)

916/918 TILLER TROUBLE SHOOTING GUIDE

CAUTION: ALWAYS USE EXTREME CARE WHEN TROUBLE SHOOTING OR MAKING ADJUSTMENTS ON THE TILLER. STAY CLEAR OF TINES WHEN ENGINE IS RUNNING. ALWAYS SHUT THE ENGINE OFF BEFORE DISASSEMBLING ANY COMPONENT.

A. ENTIRE HYDRAULIC SYSTEM DOES NOT OPERATE AND THE ENGINE IS NOT UNDER LOAD

- | | |
|---|--|
| 1. Broken or improperly adjusted clutch (actuator) cable. | If broken, replace. Remove slack then adjust for 7/16" to 1/2" movement at actuator lever pin. |
| 2. Low hydraulic oil in tank. | Fill to center of sight glass. |
| 3. Hydraulic pump-to-engine coupler has slipped. | Check for wear and replace both coupler halves and rubber spider as needed. |
| 4. Hydraulic pump worn or tine motor relief valve not functioning properly. | Follow the series of tests described below: |

Remove the tank end of hose that goes from the pump to the tank. Start the engine and with the tines and wheels in neutral, pump off about four gallons of hydraulic oil into a clean bucket. (The .52 CID pump, @ 1000 PSI & 3000 RPM, should pump at the rate of 6.5 GPM.) Replace the hose and remove the tank lid. Remove the end of the intake hose from the fitting on the tank lid. Submerge the end of the hose in the hydraulic oil in the tank. (A non-collapsible hose extension may be required.) Block the tines with a short 4 X 4 and stand to the side.

With tines selected to forward rotation, activate the actuator valve and check to see where the oil enters the tank. If the pump is good, the oil will enter through the relief valve or the return line from the filter. If the oil returns only through the filter return, the tine-drive motor is bad.

If the oil returns through the relief valve but does not kill the engine, check the out-put pressure of the pump. To do this, "T" a 4000 pound gauge into the line at the tank. **DO NOT BLOCK THE LINE OR DEAD-HEAD THE GAUGE INTO THE LINE.** With the tines in forward and blocked, activate the hydraulic valve as before. The relief valve is set at 2750 pounds. If the gauge reaches this pressure, the valve is OK. If not, the relief valve is bad and needs to be replaced.

If the pressure reaches 2750 pounds but there is only a small amount of oil returning, the pump is worn and should be replaced.

TROUBLE SHOOTING GUIDE (continued)

B. TINES FAIL TO ROTATE BUT WHEELS DRIVE.

- | | |
|---|---|
| 1. Clutch cable stretched so needs adjustment | Remove cable slack then adjust for 7/16" to 1/2" movement at actuator lever pin. |
| 2. Tine motor worn. | Rebuild or replace motor. New motors are available from Barreto Manufacturing, Inc. |

C. WHEELS FAIL TO TURN BUT TINES ROTATE

- | | |
|--|-----------------------|
| 1. Wheel axle keys have been sheared or removed. | Replace keys. |
| 2. Wheel relief valve bad | Replace relief valve. |

D. ENGINE LUGS DOWN OR DIES AND WHEELS AND TINES DO NOT TURN.

- | | |
|---|--|
| 1. Rocks or other obstruction blocking tines. | Shut OFF engine and remove obstruction. |
| 2. Tine shaft bound with wire, vines, or grass. | Shut OFF engine and remove debris, especially at the ends. |
| 3. Tilling depth too great for soil conditions. | Shut OFF engine and lower depth bar to raise the tines, decreasing tilling depth. |
| 4. Outboard tine shaft bearings binding. | Lubricate or replace bearings as needed. |
| 5. Engine improperly tuned or maintained. | See engine manual and correct as needed. |
| 6. Low oil alert causes engine to shut down. | This may occur if tilling on hills, (not advised). Level the tiller and check engine oil level. Fill if required. Oil alert should reset. See engine manual. |
| 7. Engine losing power due to wear. | See engine manual. |

TROUBLE SHOOTING GUIDE (continued)

E. OIL LEAKS IN HYDRAULIC SYSTEM.

- | | |
|---------------------------------|---|
| 1. Fittings are loose. | Tighten as required. |
| 2. Worn or broken hoses. | Replace as necessary. |
| 3. Oil around tine motor shaft. | Inspect tine motor for leaking shaft seal.
Rebuild or replace motor. New motors are available from Barreto Manufacturing, Inc. |

F. EXCESSIVE FOAMING OF HYDRAULIC OIL FROM VENT HOSE.

- | | |
|------------------------------|--|
| 1. Improper oil used. | Verify that hydraulic oil used has anti-foaming additives. * |
| 2. Pump sucking air. | Inspect and tighten fittings on intake side of pump. |
| 3. Hydraulic pump is faulty. | Test using procedure in section A4 above. |

* Recommended oil is CHEVRON 1000 or equivalent hydraulic oil with anti-foaming and anti-wear additives. Hydraulic oil should have an ISO/AW rating of 68.

LUBRICATION INSTRUCTIONS

- The grease zerk on both ends of the tine shaft flange bearing should be greased after every 4 to 8 hours of use.
- Grease zerks on the wheel hubs should be greased once a week or so, depending upon freewheel use.

OPERATING INSTRUCTIONS

1. READ SAFETY INSTRUCTIONS BEFORE OPERATING!
2. Be sure engine oil and hydraulic oil are at proper levels before starting the tiller.
3. STUDY AND UNDERSTAND CONTROLS BEFORE BEGINNING OPERATION!
4. NEVER RUN THE MACHINE IN REVERSE WHILE TINES ARE ROTATING!
5. Always move the tine control lever to "OFF" before reversing wheels.
6. The TINE DRIVE lever should be set at "OFF" when moving the tiller from place to place while not tilling.
7. CLUTCH (ACTUATOR) LEVER: (At left handle grip) Activates the wheel drive and tine rotation controls when squeezed. When released, all motion stops.
8. WHEEL DRIVE LEVER: The wheel speed is variable both in forward and reverse. Moving the WHEEL DRIVE lever to the right causes the tiller to go forward; moving to the left to back up. The farther the control lever is moved away from center, the faster the tiller will travel. When the lever is centered, the wheels are locked in a neutral or park position.
9. TINE DRIVE LEVER: The tines operate at a constant speed. The TINE DRIVE lever must be moved all the way over to either the forward "ON" position or "REV" position when tilling. If an object becomes lodged in the tines, put the WHEEL DRIVE lever in neutral and change direction of the tines to dislodge it.
10. OPERATE TILLER ON LEVEL GROUND ONLY!
11. TILLING OPERATION: In most soil and sod conditions, the depth bar can be set with the pin in the third hole from the top. When starting to till, move the TINE DRIVE lever to the ON (forward) or REV position. Tines will dig in either the forward or reverse rotating direction. Squeeze the CLUTCH LEVER completely to engage the tines. Move the WHEEL DRIVE lever to the right until the desired wheel speed is reached. Under most conditions, at least two passes must be made. For deeper tillage, move the depth bar up one hole at a time.

SAFETY INSTRUCTIONS

1. READ SAFETY AND OPERATING INSTRUCTIONS BEFORE OPERATING!
2. DO NOT LEAVE TILLER UNATTENDED WITH ENGINE RUNNING.
3. Always park on level surface, never on an incline.
4. USE EXTREME CAUTION IF TRANSPORTING TILLER DOWN ANY INCLINE, ESPECIALLY IF USING RAMPS OFF A PICK-UP TRUCK.
5. The SAFETY CLUTCH (ACTUATOR) lever on the left handlebar is for operator protection. **DO NOT TAPE DOWN OR OTHERWISE BY-PASS THIS SAFETY FEATURE!**
6. Objects may become airborne while operating tiller. Wear safety goggles, hard hat, protective footwear and hearing protection while operating or observing!
7. Rotating tines can cause serious injury. **KEEP HANDS AND FEET CLEAR!**
8. **KEEP TINE COVER CLOSED** and **MACHINE LEVEL** while tines are operating.
9. Buried cables or gas lines can cause serious injury or death. Contact local agencies for location.
10. Fuel exhaust and fuel fumes can cause illness or death. Operate outdoors and avoid breathing exhaust and fumes.
11. Fuel-fumes can catch fire or explode. Do not smoke or operate near flames or sparks.
12. Hydraulic oil is under extreme pressure and can get under skin and burn or poison. Check for leaks with cardboard.
13. Muffler and engine get hot enough to cause serious burns. Do not touch until cool.

SAFETY INSTRUCTIONS OVERVIEW

READ SAFETY AND OPERATING INSTRUCTIONS BEFORE OPERATING!

USE COMMON SENSE AND PLENTY OF IT!

The CLUTCH LEVER on the left handlebar is for the operator’s protection. All motion stops when the lever is released. **DO NOT TAPE THE CLUTCH LEVER UP or otherwise by-pass this safety feature!**

Call before you dig. If you do not call, you may cause an accident; suffer injuries or death; cause interruption of services; damage the environment; and/or incur project delays. Expect to be held liable for any damages caused, if you fail to call.



DANGER: Buried electric cables or gas lines can cause serious injury or death if struck with tines. Always determine location of utilities before tilling.



WARNING: Fiber optic cables convey laser light that can injure your eyesight.

STAY CLEAR of moving parts on the tiller.

Wear safety goggles and a hard hat while operating or observing!



WARNING: The tines may throw stones and debris.

Wearing adequate hearing protection while operating or observing is recommended.



WARNING: Exposure to loud noise is cumulative and may permanently damage your hearing.

Wear safety boots and gloves. Wear close-fitting clothing. Contain long hair. Do not wear jewelry. Wear reflective clothing if working near traffic.



Machinery Directive Declaration

DECLARED DUAL-NUMBER NOISE EMISSION VALUES in accordance with ISO 4871	
	Normal Operation
Measured A-weighted sound power level, L_{WA} (ref. 1pW) in decibels	106
Uncertainty, K_{WA} , in decibels	3
Measured A-weighted sound pressure level, L_{pA} (ref. 20 μ Pa) at the operator's position in decibels	87
Uncertainty, K_{pA} , in decibels	4
Values determined according to noise test code given in Directive 2000/14/EC Annex III B54 (Trencher) / BS EN ISO 4254-1 Annex B (Tiller) using the basic standard ISO 3744: 1994	
NOTE 1 - The sum of a measured noise emission value and its associated uncertainty represents an upper boundary of the range of values which is likely to occur in measurements.	

Values listed above are rounded to the nearest decibel according to ISO 4871

SAFETY INSTRUCTIONS OVERVIEW (continued)

Only operate outdoors and avoid breathing engine exhaust and fumes.



WARNING: Engine exhaust contains carbon monoxide gas that is toxic. Breathing it can cause unconsciousness and death.

Adequate lighting is required, daylight or artificial, for safe operation of the tiller.

Allow adequate side and overhead clearances between tiller and buildings, fences, and trees.



WARNING: Contact with the tines while in operation will cause serious injury or even death.

Keep away from tires to avoid getting crushed.



WARNING: Getting run over by the tiller will cause injury.

Always leave tiller parked on a level surface.



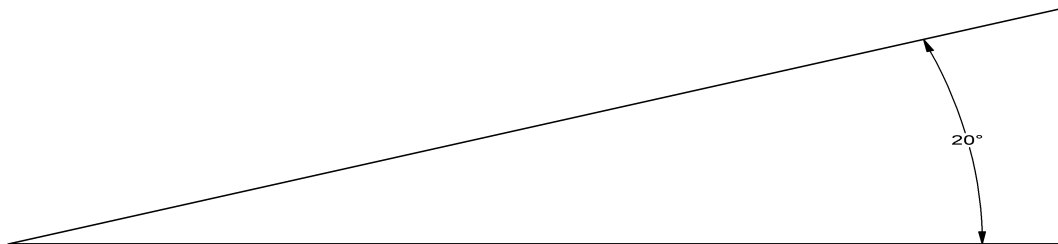
WARNING: Do not park on incline. Move the tiller to a level surface. Do not leave tiller unattended with the engine running.

Avoid inclines if at all possible.



WARNING: Navigating on any incline increases the danger of the tiller losing traction or rolling over, especially if the surface is wet. If you lose control get out of the way immediately to avoid personal injury. Navigation on inclines should be especially slow and turns very gradual.

A 20° maximum incline is allowed. Honda engines have an Oil Alert system that will automatically stop the engine if tipped more than 20°.



Do not operate tiller near any source of flammable dust or vapors.



WARNING: Sparks from the engine exhaust can cause an explosion or fire in a flammable or explosive atmosphere. Fuel fumes can catch fire or explode.

Do not operate tiller near flames or sparks.



WARNING: Fuel fumes can catch fire or explode.

Shut off engine and allow it to cool before refueling.



WARNING: Fuel fumes can catch fire or explode. Do not smoke when refueling. Do not refuel near a source of flames or sparks.

Do not touch the engine, muffler, or any of the hydraulic components until cool.



WARNING: Muffler and engine get hot enough to cause serious burns. For the safety of yourself and others, allow enough time for the engine, muffler, and the hydraulic fluid to cool completely before performing any cleaning or maintenance.

SAFETY INSTRUCTIONS OVERVIEW (continued)

Avoid contact with hydraulic fluid.



WARNING: When machine is operating, hydraulic fluid is under extreme pressure and can get under skin and burn or poison.

Keep others away. If the job site is near a road or pedestrian path, warn and divert both motorized traffic and pedestrians. As appropriate, use traffic flag personnel, signs, cones, and lighting devices to insure safety.

Never allow anybody to ride on the tiller.

Never lift the tiller over any person at any time.



WARNING: If tiller should fall it would crush anybody under it.

We recommend having a fire extinguisher suitable for petrol fires in the operating area.

Attachments can change the center of mass and machine operations. Use only Barreto attachments.

DETERMINE LOCATION OF UNDERGROUND UTILITIES

OSHA CFR 29 1926.651 requires that the estimated location of underground utilities be determined before beginning excavation or an underground drilling operation. When the actual excavation or bore approaches an estimated utility location, the exact location of the underground installation must be determined by a safe, acceptable and dependable method. If any utility cannot be precisely located, the appropriate utility company must shut it off.

Call before you dig. If you do not call, you may cause an accident; suffer injuries or death; cause interruption of services; damage the environment; and/or incur project delays. Expect to be held liable for any damages caused, if you fail to call.



DANGER: Buried electric cables or gas lines can cause serious injury or death if struck with tiller tines. Always determine location of utilities before tilling.



WARNING: Fiber optic cables convey laser light that can injure your eyesight.

CALL 1-888-258-0808 TO LOCATE UTILITIES BEFORE TILLING (US. OR CANADA). This free service will provide a “One-Call” number for the geographic area that you select. Before you start any digging project, be sure to call the local One-Call system in your area and any utility company that does not subscribe to the One-Call system. The One-Call representative will notify participating utility companies of your proposed digging activities. Utilities will then mark their underground facilities by using the following international marking codes:

Red	Electric
Yellow	Gas, oil, or petroleum
Orange	Communication, telephone, television
Blue	Potable water
Green/brown	Sewer
White	Proposed excavation
Pink	Surveying

For areas not represented by One-Call Systems International, contact the appropriate utility companies to locate and mark the underground installations. Do not rely on visual evidence of underground utilities such as manhole covers or electrical drop boxes...**CALL!**

WORK SITE ASSESSMENT

Examine the work area for any conditions or obstructions that may inhibit tilling or create a safety hazard for the operator or others. Use the information in this manual combined with good judgment to identify any hazards to avoid.

In addition to calling to DETERMINE LOCATION OF UNDERGROUND UTILITIES (see previous section for details), the operator and/or job foreman should visually inspect the work site. Look for electrical drop boxes, notices of underground placements, manhole covers, recent trenching or tilling activity, any evidence of possible underground placements, banks, drop-offs, rocks, wire, uneven terrain, any existing holes and toxic ground conditions.



Only operate tiller outdoors and avoid breathing engine exhaust and fumes.
WARNING: Engine exhaust contains carbon monoxide gas that is toxic. Breathing it can cause unconsciousness and death.



Do not operate tiller near any source of flammable dust or vapors.
WARNING: Sparks from the engine exhaust can cause an explosion or fire in a flammable or explosive atmosphere. Fuel fumes can catch fire or explode.

Allow adequate side and overhead clearances between tiller and any objects such as buildings, fences, and trees.

Adequate lighting is required, daylight or artificial, for safe operation of the tiller.

Keep others away. If the job site is near a road or pedestrian path, warn and divert both motorized traffic and pedestrians. As appropriate, erect barriers, use traffic flag personnel, signs, cones, and lighting devices to insure safety.



WARNING: Someone could step into the tilled area by accident. Walking near the edge of the tilled area could cause loss of balance and possibly cause someone to fall into the rotating tines. Contact with the rotating tines while in operation will cause serious injury or even death.

MACHINE FUNCTION CHECK: If the operator releases the CLUTCH LEVER, the wheel drive and rotating tines should stop. This is intended for your safety and must be maintained in good functional condition. Contact your dealer or the factory if anything on the tiller does not function properly.

CONTACT WITH UNDERGROUND UTILITIES

After LOCATING UNDERGROUND UTILITIES and performing the WORK SITE ASSESSMENT, accidental tine contact with a buried utility might still occur. If it does, stop tilling and call 911 for help.

If you cut a wire or cable, assume that you do not know what kind it is. It may be electrical or any one of several communication lines: telephone, television, or fiber optic. In any case, do not touch it or even look at the ends of it. Stop tilling and call 911 for help. Do not till any more until the appropriate utility company has assessed the situation, taken appropriate action, and informed you that is safe to proceed.

If you strike a pipe, it could be gas, oil, petroleum, water or sewer. In any case, stop tilling, shut off the engine, and evacuate the area immediately. **Call 911 for help.**

Electrical wires or cables: If you think that you may have severed electrical wires, stop tilling and call 911 for help. Keep yourself and other people away from the area.



DANGER: An electric shock could kill you. Assume that any severed wire or cable is HOT with voltage and do not touch it!

Gas lines: If you think that you may have struck a gas line, shut off the engine and evacuate the area immediately. Call 911 for help.



DANGER: A gas explosion could kill you. Sparks will likely occur from the tines scraping the metal pipe. If gas leaks out an explosion could easily occur.

Fiber optic cables: If you think that you may have severed a fiber optic cable, do not touch or even look at the ends of it.



WARNING: Fiber optic cables convey laser light that can injure your eyesight. Call 911 for help.

INDEX

ACTUATOR, 10, 11
ASSEMBLY INSTRUCTIONS, 3
BREAK IN PROCEDURE, 3
CALL BEFORE YOU DIG, 15, 17
CLUTCH LEVER, 18
CLUTCH LEVER, 13, 15
ELECTRICAL SCHEMATIC - HONDA GX270, 6
ELECTRICAL SCHEMATIC - SUBARU EX27, 7
ENGINE, 3, 4, 5, 9, 10, 11, 13, 14, 16, 18, 19
EXHAUST, 14, 16, 18
FREE WHEEL HUBS, 3
FUMES, 14, 16, 18
GREASE, 4, 12
HARD HAT, 14, 15
HEARING PROTECTION, 14, 15
HOUR METER, 5
HYDRAULIC, 10, 12, 14
HYDRAULIC FLUID, 4, 10, 12, 13, 16, 17
HYDRAULIC OIL FILTER, 4
HYDRAULIC PUMP, 4
HYDRAULIC SCHEMATIC, 2, 8
INCLINES, 16
LUBRICATION. *See* GREASE
NOISE EMISSION VALUES, 15
OPERATING INSTRUCTIONS, 2, 13, 14, 15
REFUELING, 16
SAFETY BOOTS, 15
SAFETY GOGGLES, 14, 15
SAFETY INSTRUCTIONS, 2, 13, 14, 15, 16, 17
SERVICE INFORMATION, 4
SPECIFICATIONS, 9
TINE DRIVE LEVER, 13
TINE SHAFT, 4, 11, 12
TINES, 3, 4, 10, 11, 13, 14, 15, 16, 17, 19
TROUBLE SHOOTING, 10, 11, 12
UNDERGROUND UTILITIES, 17, 18, 19
WARRANTY, 2, 5
WHEEL DRIVE, 13, 18
WORK SITE, 18, 19

THE
BARRETO
MODEL E916/918
HYDRAULIC REAR TINE TILLER
EXPLODED VIEWS WITH PART NUMBERS

CONGRATULATIONS!

You are now the proud owner of a BARRETO tiller. The following pages have detailed views of your tiller, along with corresponding part numbers. If you have any questions or need any replacement parts in the future, please contact us at your convenience. Our toll-free phone number, fax and email are listed below and parts may be ordered through any of these methods.

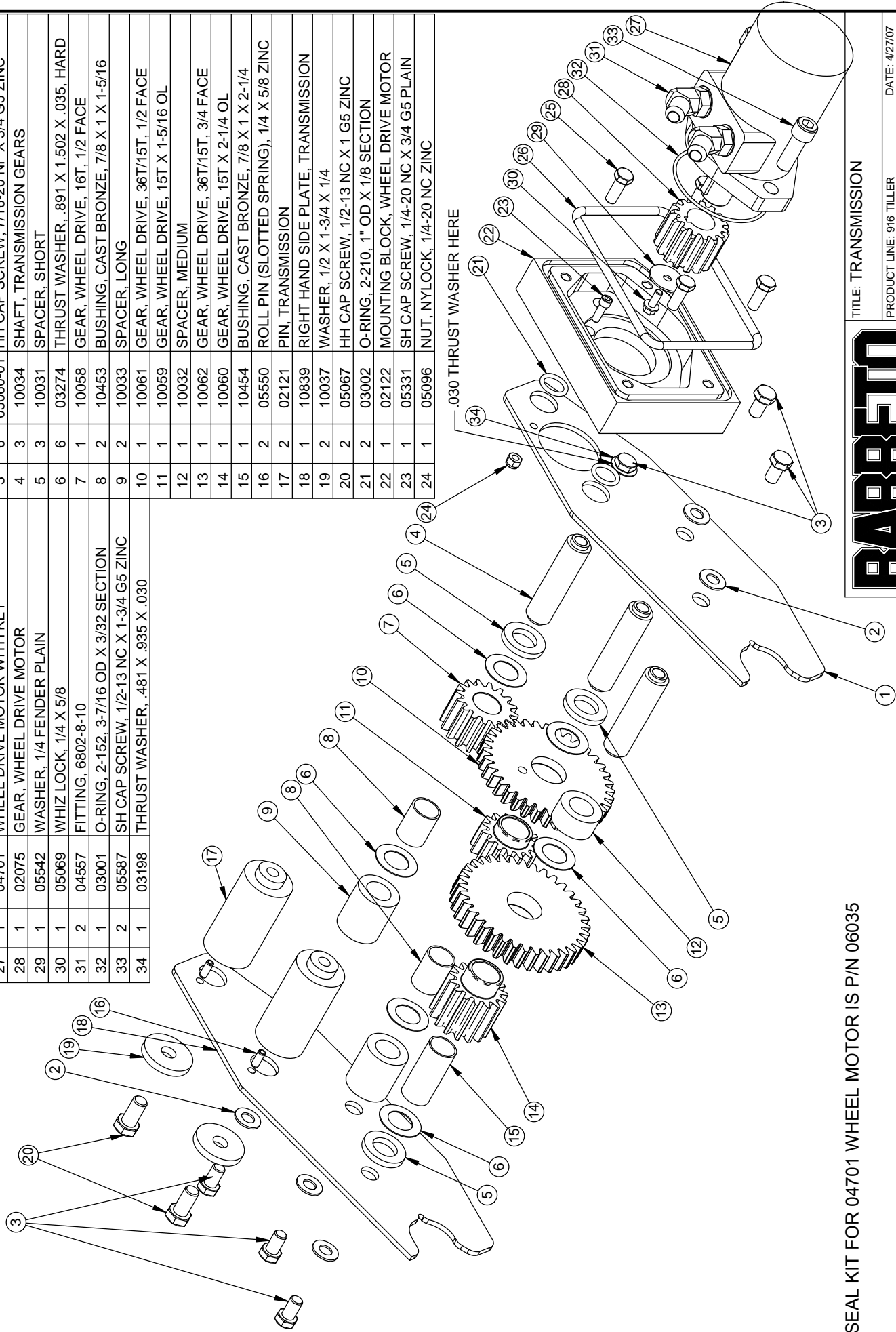
Thank you for your patronage and confidence in BARRETO equipment.

Barreto Manufacturing, Inc.
Innovative Equipment Engineered to Last
66498 Highway 203
La Grande, OR 97850
1-800-525-7348
1-541-963-6755 Fax
E-Mail: info@barretomfg.com
Web Site: <http://www.barretomfg.com>

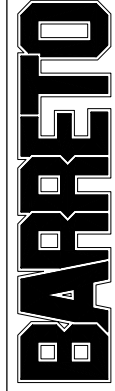
Machine Identification Record

BARRETO Customer number _____
Machine model number _____
Machine serial number _____
Engine manufacturer _____
Engine model number _____
Engine serial number _____

REF. QTY.	PART NO.	DESCRIPTION	REF. QTY.	PART NO.	DESCRIPTION
25	4	05059	1	10840	LEFT HAND SIDE PLATE, TRANSMISSION
26	1	03915	2	05149	WASHER, 7/16 SAE ZINC
27	1	04701	3	05060-01	HH CAP SCREW, 7/16-20 NF X 3/4 G5 ZINC
28	1	02075	4	10034	SHAFT, TRANSMISSION GEARS
29	1	05542	5	10031	SPACER, SHORT
30	1	05069	6	03274	THRUST WASHER, .891 X 1.502 X .035, HARD
31	2	04557	7	10058	GEAR, WHEEL DRIVE, 16T, 1/2 FACE
32	1	03001	8	10453	BUSHING, CAST BRONZE, 7/8 X 1 X 1-5/16
33	2	05587	9	10033	SPACER, LONG
34	1	03198	10	10061	GEAR, WHEEL DRIVE, 36T/15T, 1/2 FACE
			11	10059	GEAR, WHEEL DRIVE, 15T X 1-5/16 OL
			12	10032	SPACER, MEDIUM
			13	10062	GEAR, WHEEL DRIVE, 36T/15T, 3/4 FACE
			14	10060	GEAR, WHEEL DRIVE, 15T X 2-1/4 OL
			15	10454	BUSHING, CAST BRONZE, 7/8 X 1 X 2-1/4
			16	05550	ROLL PIN (SLOTTED SPRING), 1/4 X 5/8 ZINC
			17	02121	PIN, TRANSMISSION
			18	10839	RIGHT HAND SIDE PLATE, TRANSMISSION
			19	10037	WASHER, 1/2 X 1-3/4 X 1/4
			20	05067	HH CAP SCREW, 1/2-13 NC X 1 G5 ZINC
			21	03002	O-RING, 2-210, 1" OD X 1/8 SECTION
			22	02122	MOUNTING BLOCK, WHEEL DRIVE MOTOR
			23	05331	SH CAP SCREW, 1/4-20 NC X 3/4 G5 PLAIN
			24	05096	NUT, NYLOCK, 1/4-20 NC ZINC



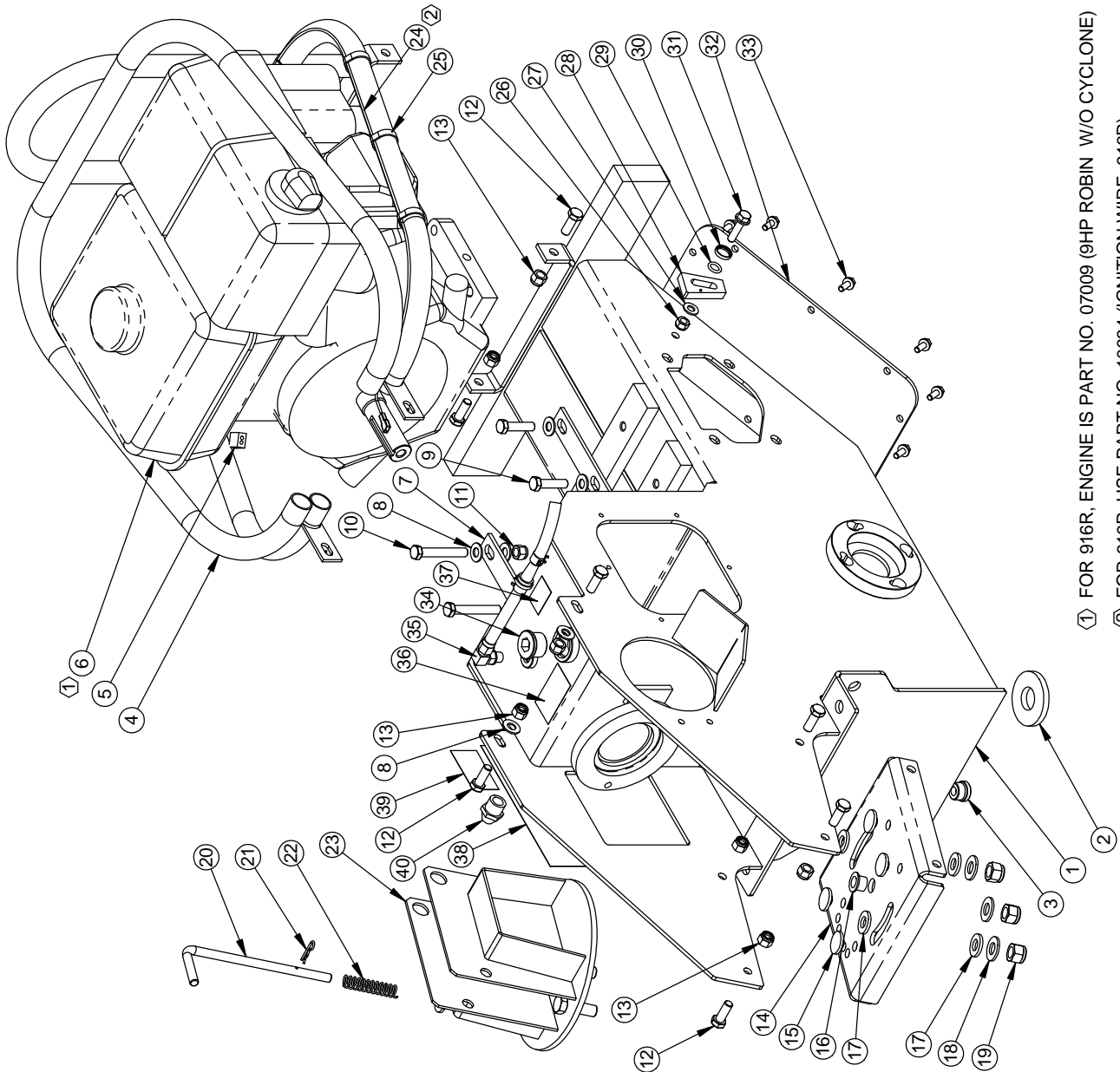
SEAL KIT FOR 04701 WHEEL MOTOR IS P/N 06035



TITLE: TRANSMISSION

PRODUCT LINE: 916 TILLER DATE: 4/27/07
 SCALE: 1:4.3 DWG#: 00237 R1
 SHEET 1 OF 1

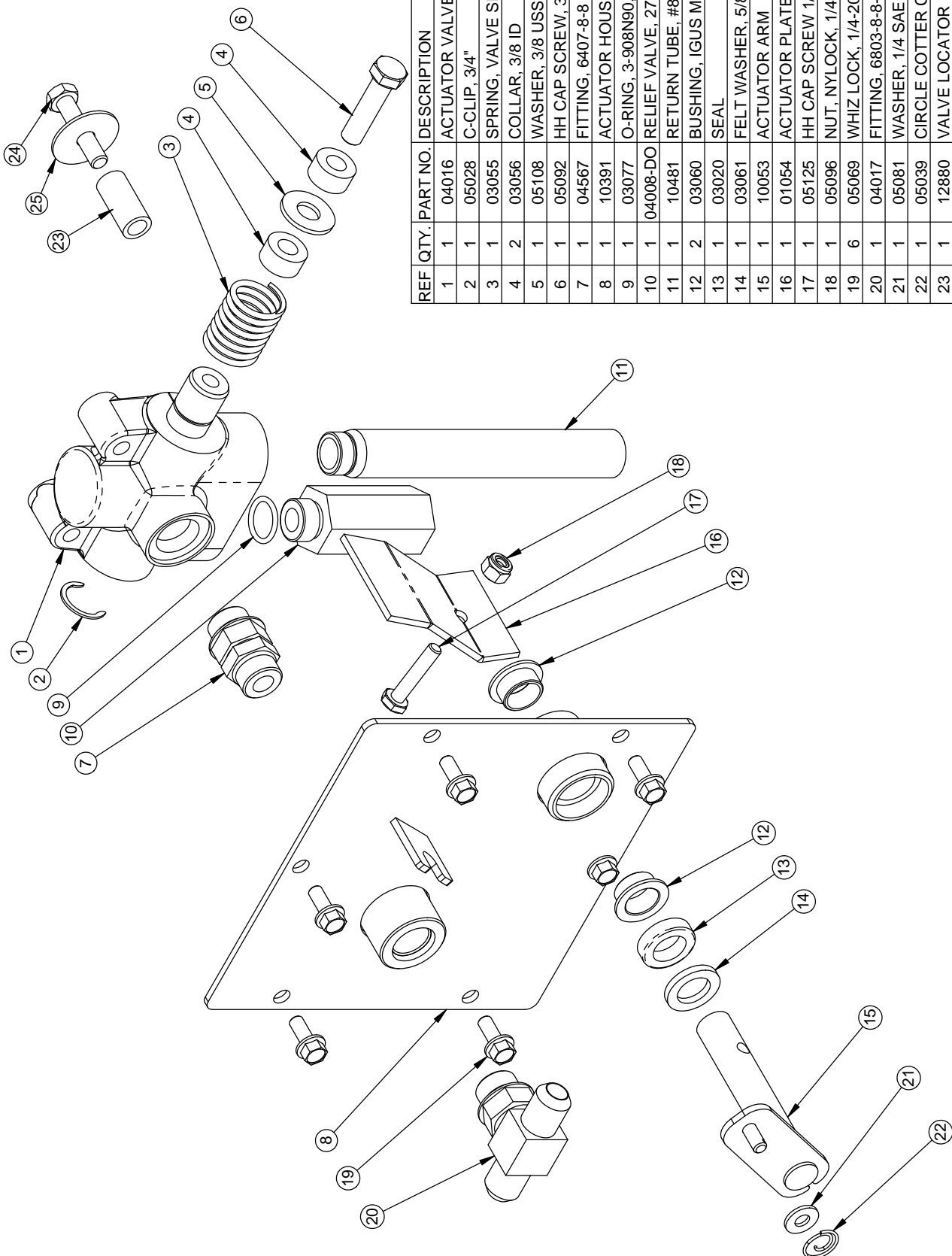
REF. QTY.	PART NO.	DESCRIPTION
1	10701	916 & 918 BODY, BOLT ON TORQUE TUBE
2	03520	MAGNET
3	10361	FITTING, 6409-8 PLUG
4	10188	ENGINE GUARD, 916
5	03806	QUICK-SPLICE
6	07006	ENGINE, 9 HP HONDA GX270
7	11188	SPACER, 9 HP ENGINES
8	05101	WASHER, 3/8 SAE ZINC
9	05092	HH CAP SCREW, 3/8-16 NC X 1-1/2 G5 ZINC
10	05284	HH CAP SCREW, 3/8-16 NC X 2-1/2 G8 ZINC
11	05073	NUT, NYLOCK, 3/8-16 NC
12	05056	HH CAP SCREW, 3/8-24 NF X 1 G5 ZINC
13	05072	NUT, NYLOCK, 3/8-24 NF
14	10035	MOUNTING PLATE, HANDLE BAR
15	10064	BUSHING, NYLATRON, 1" OD SOLID
16	03501	BUSHING, IGUS MFI-0810-08
17	10469	THRUST WASHER, .500 X 1.000 X .125 NYLATRON
18	05102	WASHER, 1/2 SAE ZINC HARDENED
19	05098	NUT, NYLOCK, 1/2-13 NC
20	10068	PIN, HANDLE BAR
21	03065	HAIR SPRING COTTER #4
22	03080	SPRING
23	10036	HANDLE BAR BRACKET
24	10558	IGNITION WIRE, 916
25	03035	TIE WRAP, 1/8 X 6
26	05273	NUT, NYLOCK, 5/16-18 NC
27	05068	WASHER, 5/16 SAE ZINC
28	10555	WEDGE
29	03907	O-RING, 2-111, 5/8 OD X 3/32 SECTION
30	02526	HOUSING, 2-111 O-RING & FLANGE SCREW
31	05138	HH FLANGE SCREW, 5/16-18 NC X 1-1/4 G8 ZINC
32	10056	ACCESS PLATE
33	05069	WHIZ LOCK, 1/4-20 UNC X 5/8
34	10526	FITTING, 6409-12 PLUG
35	10189 R2	BREATHER HOSE ASSEMBLY
36	03040-06	DECAL, "HYDRAULIC OIL ONLY"
37	03040-16	DECAL, "CE"
38	03040-11	DECAL, "BARRETO", 2-3/16 X 7-3/8
39	03040-57	DECAL, "HYDRAULIC OIL LEVEL"
40	03503	SIGHT GAUGE



- ① FOR 916R, ENGINE IS PART NO. 07009 (9HP ROBIN W/O CYCLONE)
- ② FOR 916R, USE PART NO. 10634 (IGNITION WIRE, 916R)

BARRETO

TITLE: BODY,
BOLT ON TORQUE TUBE
PRODUCT LINE: 916/18 DATE: 12/4/06
SCALE: 1:7.2 DWG#: 00238 R4
SHEET 1 OF 1



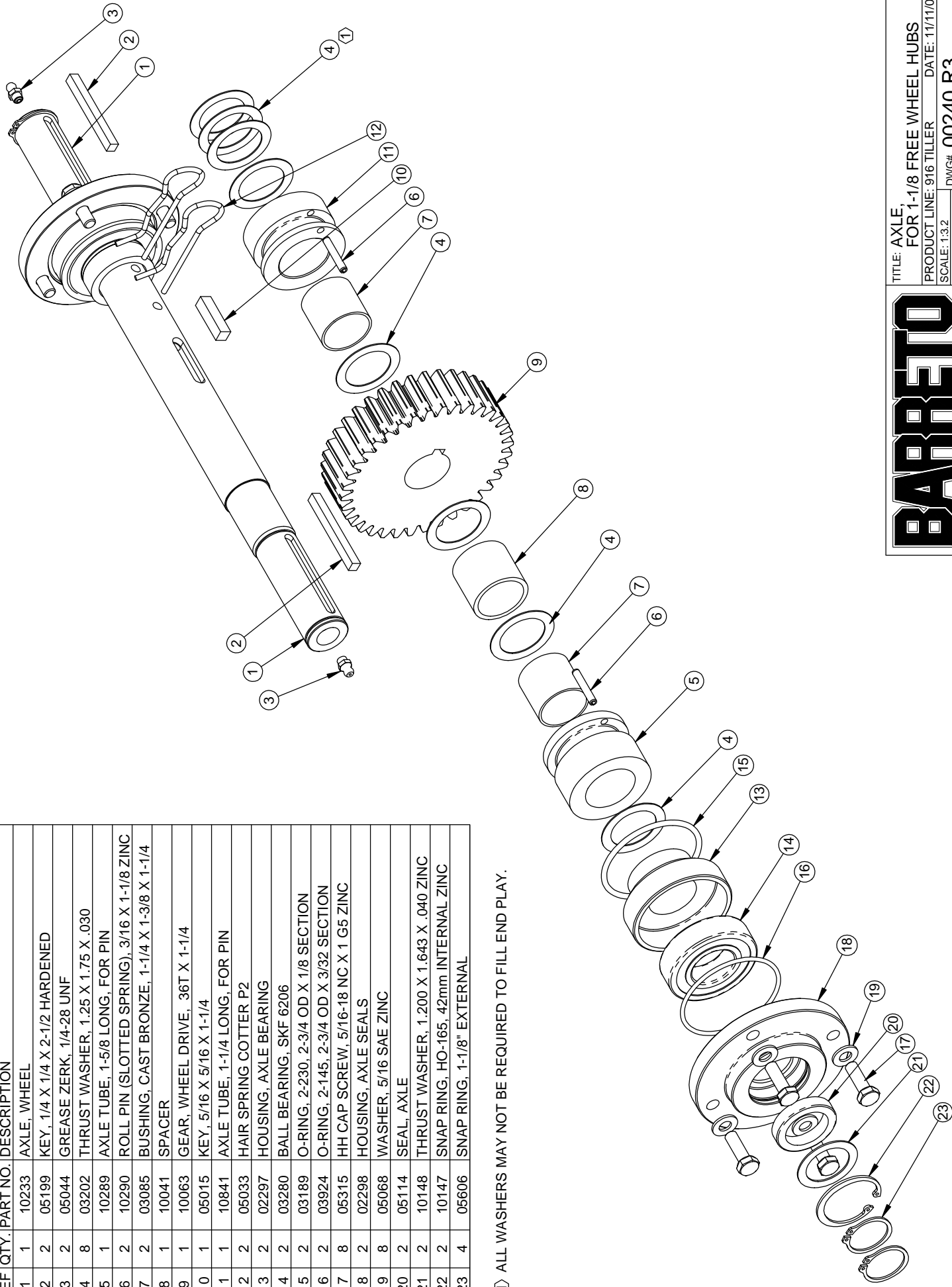
REF	QTY	PART NO	DESCRIPTION
1	1	04016	ACTUATOR VALVE, O-RING PORTS
2	1	05028	C-CLIP, 3/4"
3	1	03055	SPRING, VALVE SPOOL RETURN
4	2	03056	COLLAR, 3/8 ID
5	1	05108	WASHER, 3/8 USS, ZINC
6	1	05092	HH CAP SCREW, 3/8-16 NC X 1-1/2 G5 ZINC
7	1	04567	FITTING, 6407-8-8
8	1	10391	ACTUATOR HOUSING PLATE
9	1	03077	O-RING, 3-908N90, -8 FITTINGS
10	1	04008-DO	RELIEF VALVE, 2750 POUND, O-RING
11	1	10481	RETURN TUBE, #8 O-RING
12	2	03060	BUSHING, IGUS MFI-1012-06
13	1	03020	SEAL
14	1	03061	FELT WASHER, 5/8 X 1 X 1/8
15	1	10053	ACTUATOR ARM
16	1	01054	ACTUATOR PLATE
17	1	05125	HH CAP SCREW 1/4-20 NC X 1-1/4 G5 ZINC
18	1	05096	NUT, NYLOCK, 1/4-20 NC ZINC
19	6	05069	WHIZ LOCK, 1/4-20 NC X 5/8 ZINC
20	1	04017	FITTING, 6803-8-8-8
21	1	05081	WASHER, 1/4 SAE ZINC
22	1	05039	CIRCLE COTTER CC-3
23	1	12880	VALVE LOCATOR
24	1	05294	HH CAP SCREW, 5/16-18 NC X 1-1/2 G5 ZINC
25	1	05541	WASHER, 5/16 FENDER ZINC

BARRETO

TITLE: ACTUATOR VALVE
 PRODUCT LINE: 916 TILLER DATE: 10/13/14
 SCALE: 1:2.5 DWG#: 00239 R3
 SHEET 1 OF 1

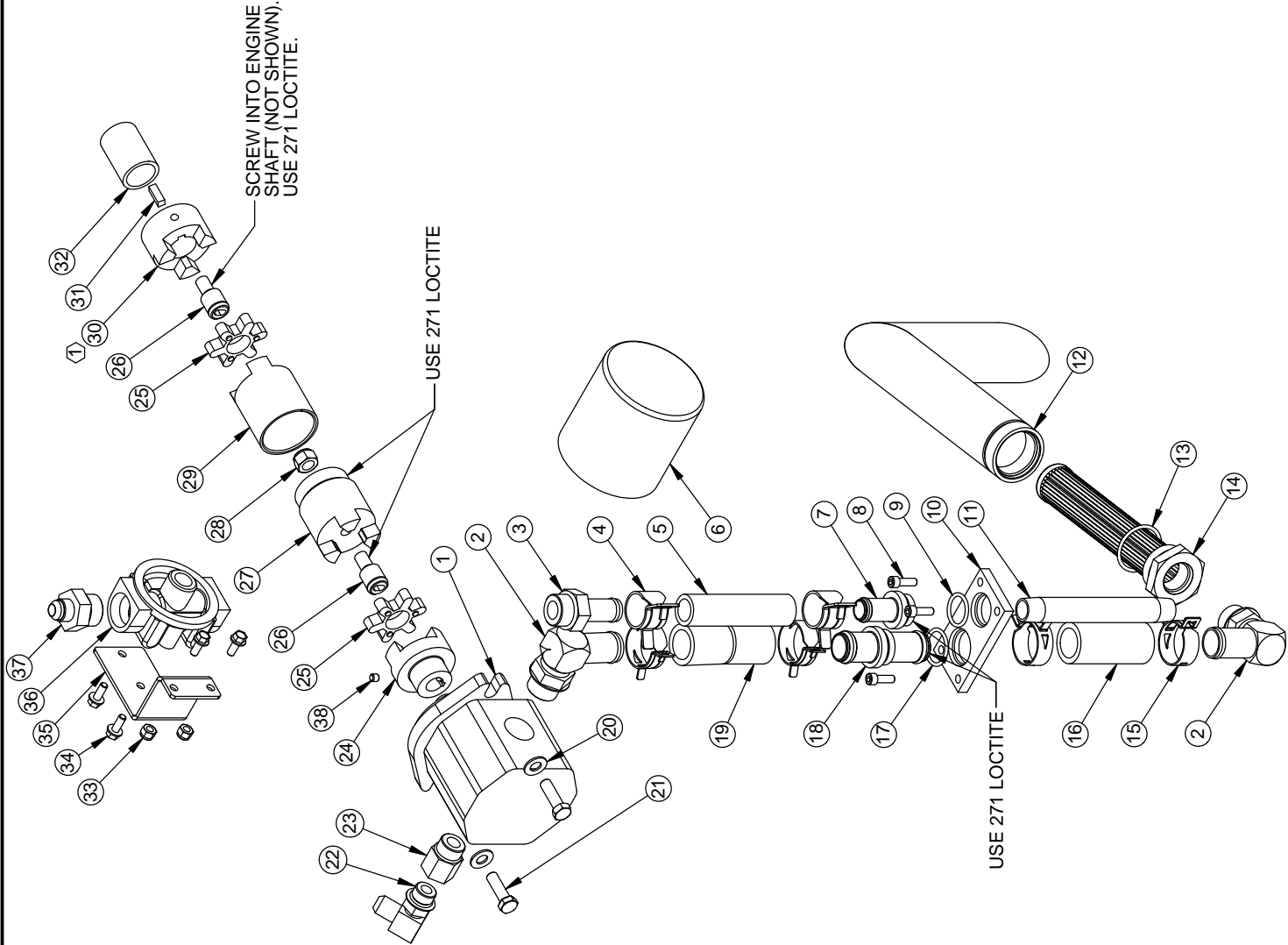
REF	QTY.	PART NO.	DESCRIPTION
1	1	10233	AXLE, WHEEL
2	2	05199	KEY, 1/4 X 1/4 X 2-1/2 HARDENED
3	2	05044	GREASE ZERK, 1/4-28 UNF
4	8	03202	THRUST WASHER, 1.25 X 1.75 X .030
5	1	10289	AXLE TUBE, 1-5/8 LONG, FOR PIN
6	2	10290	ROLL PIN (SLOTTED SPRING), 3/16 X 1-1/8 ZINC
7	2	03085	BUSHING, CAST BRONZE, 1-1/4 X 1-3/8 X 1-1/4
8	1	10041	SPACER
9	1	10063	GEAR, WHEEL DRIVE, .36T X 1-1/4
10	1	05015	KEY, 5/16 X 5/16 X 1-1/4
11	1	10841	AXLE TUBE, 1-1/4 LONG, FOR PIN
12	2	05033	HAIR SPRING COTTER P2
13	2	02297	HOUSING, AXLE BEARING
14	2	03280	BALL BEARING, SKF 6206
15	2	03189	O-RING, 2-230, 2-3/4 OD X 1/8 SECTION
16	2	03924	O-RING, 2-145, 2-3/4 OD X 3/32 SECTION
17	8	05315	HH CAP SCREW, 5/16-18 NC X 1 G5 ZINC
18	2	02298	HOUSING, AXLE SEALS
19	8	05068	WASHER, 5/16 SAE ZINC
20	2	05114	SEAL, AXLE
21	2	10148	THRUST WASHER, 1.200 X 1.643 X .040 ZINC
22	2	10147	SNAP RING, HO-165, 42mm INTERNAL ZINC
23	4	05606	SNAP RING, 1-1/8" EXTERNAL

① ALL WASHERS MAY NOT BE REQUIRED TO FILL END PLAY.



BARRETO

TITLE: AXLE,
FOR 1-1/8 FREE WHEEL HUBS
PRODUCT LINE: 916 TILLER DATE: 11/11/08
SCALE: 1:3.2 DWG#: 00240 R3
SHEET 1 OF 1



REF	QTY.	PART NO.	DESCRIPTION
1	1	04004-A	PUMP, HYDRAULIC
2	2	04530	FITTING, 4601-16-12
3	1	04219	FITTING, 4604-12-12
4	2	05008	CLAMP, 1" HOSE, CTB-29
5	1	10796	HOSE, RETURN TO TANK
6	1	03951	FILTER, HYDRAULIC OIL, WITH BY-PASS
7	1	10853	FITTING, 3/4 HOSE BIB, 1/2 NPT
8	4	05611	SH CAP SCREW, 1/4-20 NC X 3/4 ZINC
9	1	03075	O-RING, 3-912N90, -12 FITTINGS
10	1	10851	MOUNTING PLATE, HOSE BIB FITTINGS
11	1	01020	PIPE NIPPLE, 1/2 X 6, SCH 40
12	1	10860	SUCTION TUBE, #20 O-RING
13	1	03293	O-RING, 3-920N90, -20 FITTINGS
14	1	10247	SUMP SCREEN #20 EXT #12 INT O-RING
15	4	05225	CLAMP, 1-1/2" HOSE, CTB-36 ST
16	1	10184	HOSE, SUMP SCREEN
17	1	10855	O-RING, 3-914N90, -14 FITTINGS
18	1	10852	FITTING, 1" HOSE BIBS
19	1	10854	HOSE, PUMP INTAKE
20	2	05101	WASHER, 3/8 SAE ZINC
21	2	05091	HH CAP SCREW, 3/8-16 NC X 1-1/4 G5 ZINC
22	1	04554	FITTING, 6801-8-8
23	1	04209	FITTING, 6410-10-8
24	1	10747	JAW COUPLER, PUMP, 5/8 BORE
25	2	03022	SPIDER, RUBBER
26	2	10738	PILOT
27	1	10737	COUPLER SHAFT, PUMP SIDE
28	1	05077	NUT, NYLOCK, 7/16-20 NF ZINC
29	1	10739	COUPLER SHAFT, ENGINE SIDE
30	1	03023	JAW COUPLER, 1" BORE L095
31	1	05014	KEY, 1/4 X 1/4 X 3/4
32	1	10180	SPACER, ENGINE SHAFT
33	2	05096	NUT, NYLOCK, 1/4-20 NC ZINC
34	4	05069	WHIZ LOCK, 1/4-20 NC X 5/8 ZINC
35	1	10798	BRACKET, FILTERHEAD
36	1	04403	FILTER HEAD, #12 O-RING
37	1	10808	FITTING, 6400-8-12
38	1	05143	SET SCREW .25 NF X .25 CUP

Coupler shaft pump to engine kit includes refs 24-31, 38 and is p/n 10737-K.

NOTES:

- ① COMES WITH SET SCREW, REPLACEMENT SET SCREW IS 5/16 X 5/16, PART NO. 05127.

BARRERO

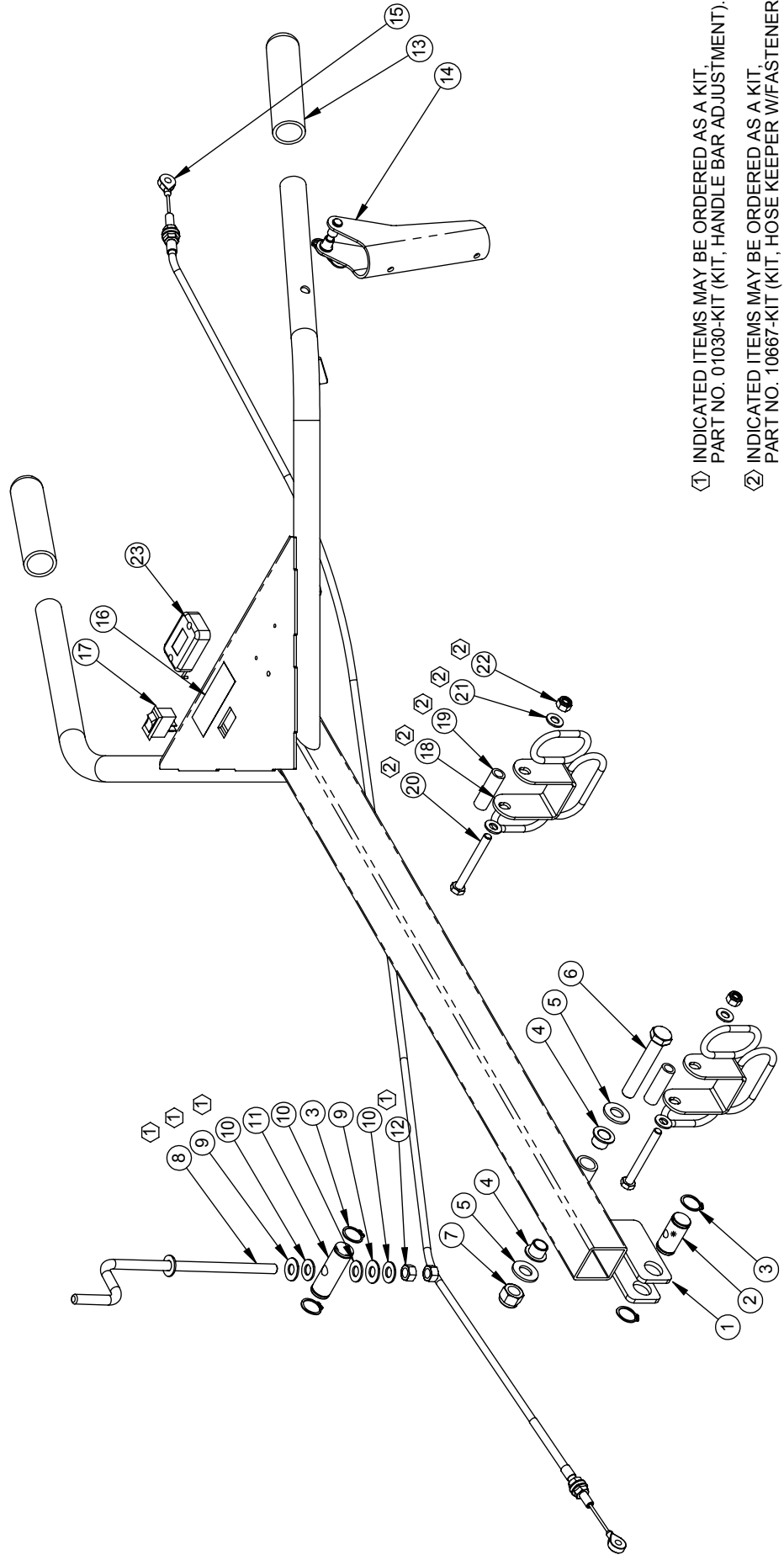
TITLE: PUMP

PRODUCT LINE: 916 DATE: 2/15/06

SCALE: 1:5.6 DWG#: 00241 R3

SHEET 1 OF 1

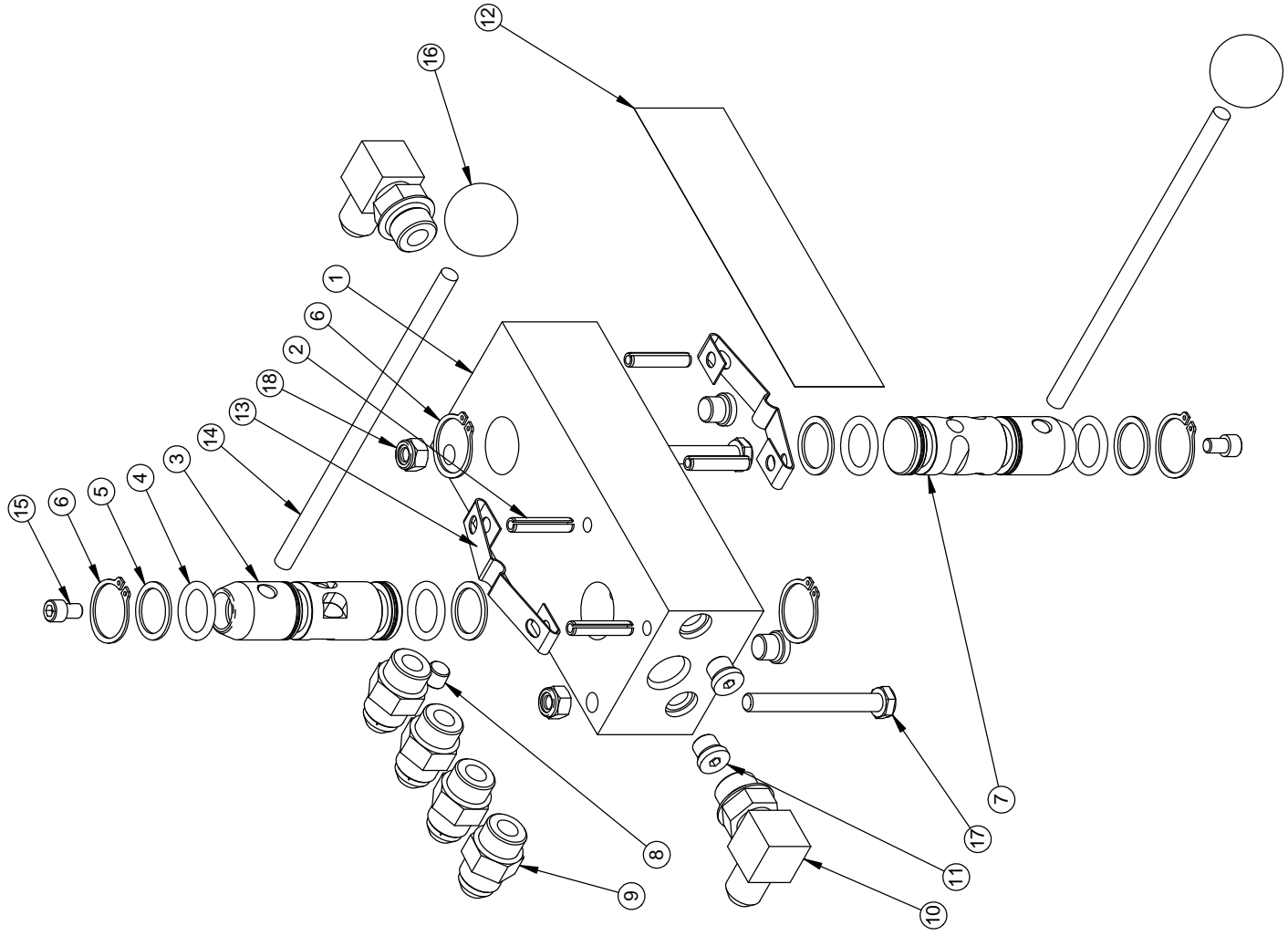
REF QTY.	PART NO.	DESCRIPTION	REF QTY.	PART NO.	DESCRIPTION
1	01017	HANDLE BARS	13	03032-01	GRIP, 1 X 5 (P/N 03032 IS A PAIR)
2	02027-L	HANDLE BAR ADJUSTER PIN, LOWER	14	03029	LEVER ASSEMBLY (COMPLETE)
3	05216	SNAP RING, 3/4 EXTERNAL	15	10057	CABLE, ACTUATOR
4	03501	BUSHING, IGUS MFI-0810-08	16	03341-07	DECAL, "IGNITION OFF/ON"
5	05102	WASHER, 1/2 SAE ZINC HARDENED	17	06420	ROCKER SWITCH, IGNITION OFF/ON
6	05093	HH CAP SCREW, 1/2-13 NC X 3 G5 ZINC	18	10667	HOSE KEEPER
7	05098	NUT, NYLOCK, 1/2-13 NC ZINC	19	10668	SPACER, HOSE KEEPER
8	01030	CRANK, HANDLE BAR ADJUSTMENT	20	05065	HH CAP SCREW, 5/16-18 NC X 2-3/4 G5 ZINC
9	05058	WASHER, 3/8 NYLON	21	05068	WASHER, 5/16 SAE ZINC
10	05103	WASHER, 3/8 A325 HARDENED ZINC	22	05273	NUT, NYLOCK, 5/16-18 NC ZINC
11	02027-U	PIN, HANDLE BAR ADJUSTMENT, UPPER	23	03009 R1	HOUR METER, WITH FLASH ALERT
12	05269	NUT, 3/8-16 NC GRB ZINC			



- ① INDICATED ITEMS MAY BE ORDERED AS A KIT, PART NO. 01030-KIT (KIT, HANDLE BAR ADJUSTMENT).
- ② INDICATED ITEMS MAY BE ORDERED AS A KIT, PART NO. 10667-KIT (KIT, HOSE KEEPER W/FASTENERS).

BARRETO

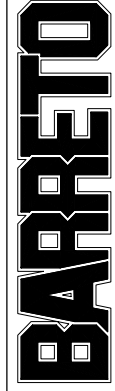
REF	QTY.	PART NO.	DESCRIPTION
1	1	04010	CONTROL VALVE BODY (ORDER 04010-K)
2	4	05200	ROLL PIN (SLOTTED SPRING), 1/4 X 1-1/4 ZINC
3	1	04015-D	VALVE SPOOL, TINES (ORDER 04010-K)
4	4	03002	O-RING, 2-210, 1" OD X 1/8 SECTION
5	4	03025	BACK-UP RING, 1" TEFLON
6	4	05010	SNAP RING, 1" EXTERNAL
7	1	04015-C	VALVE SPOOL, WHEEL DRIVE (ORDER 04010-K)
8	1	05023	PIPE PLUG, 1/8"
9	4	04520	FITTING, 6400-8-8
10	2	04554	FITTING, 6801-8-8
11	4	03300	FITTING, 6409-4 PLUG
12	1	03040	DECAL, CONTROL VALVE
13	2	03027	DETENT SPRING
14	2	02017	HANDLE, 5/16 X 7
15	2	05573	SH CAP SCREW, 1/4-20 NC X 3/8 ZINC
16	2	03026	KNOB, 5/16-NC
17	2	05065	HH CAP SCREW, 5/16-18 NC X 2-3/4 G5 ZINC
18	2	05273	NUT, NYLOCK, 5/16-18 NC ZINC



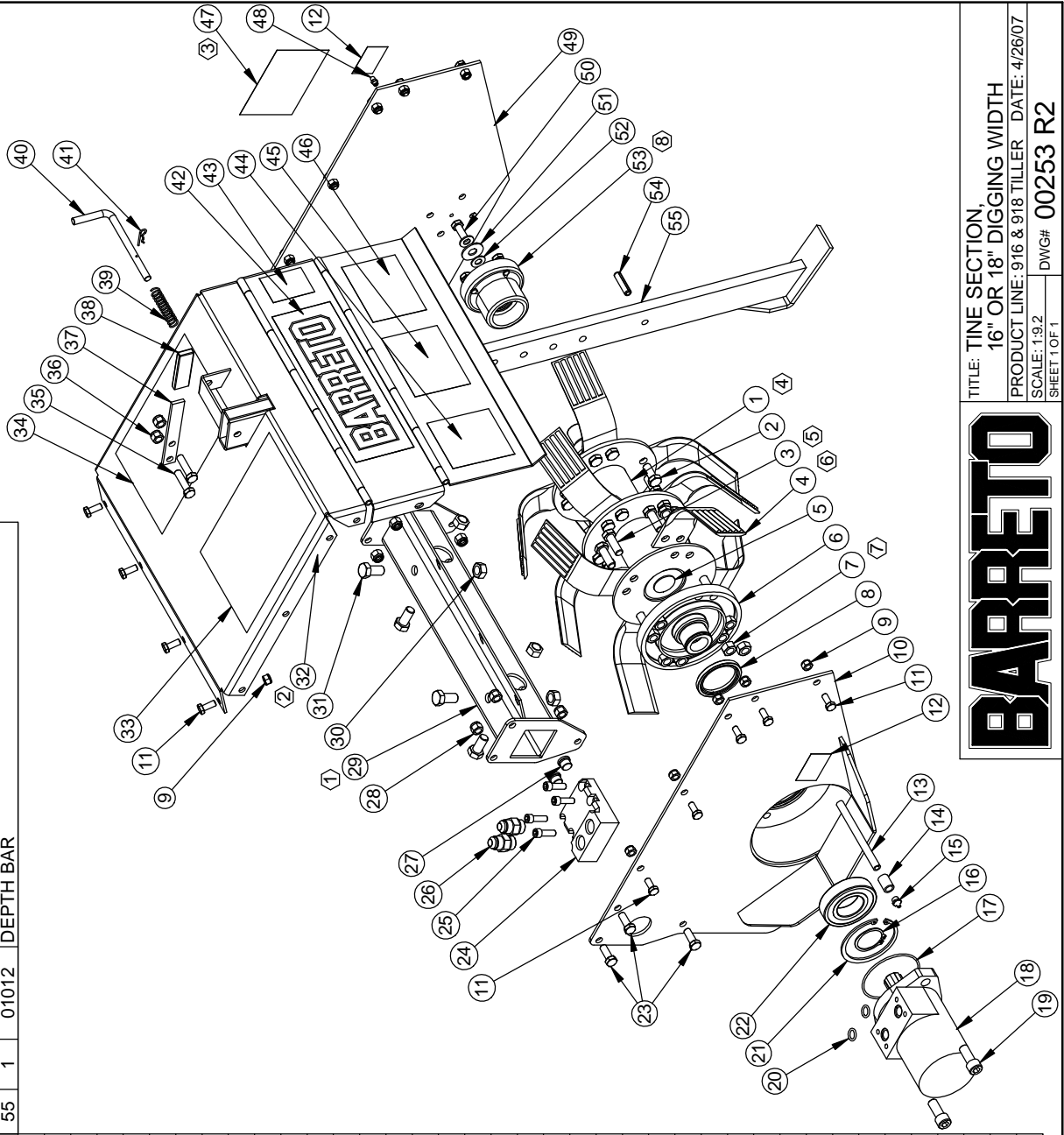
TITLE: CONTROL VALVE

PRODUCT LINE: 916 DATE: 4/26/07

SCALE: 1:3 SHEET 1 OF 1 DWG# 00251 R1



REF. QTY.	PART NO.	DESCRIPTION	REF. QTY.	PART NO.	DESCRIPTION
1	11279	TINE SHAFT	48	05044	GREASE ZERK, 1/4-28 UNF
2	05061	HH CAP SCREW, 7/16-20 NF X 1 G8 ZINC	49	10146	SIDE PLATE, RH TINE SECTION
3	05063	HH CAP SCREW, 7/16-20 NF X 1-1/4 G8 ZINC	50	05059	HH CAP SCREW, 3/8-16 NC X 1 G5 ZINC
4	03196	TINE, REVERSIBLE	51	05083	WASHER, 7/16 USS ZINC
5	03928	SOFT PLUG, 1-1/4 DIA	52	05103	WASHER, 3/8 A325 HARDENED ZINC
6	11278	TINE MOTOR HUB, SPLINED	53	10144	OUTBOARD BEARING ASSEMBLY
7	05074	NUT, 7/16-20 NF G8 ZINC	54	05006	ROLL PIN (SLOTTED SPRING), 3/8 X 1-1/2 ZINC
8	03930	SEAL, CR 19763	55	01012	DEPTH BAR
9	05071	NUT, NYLOCK, 5/16-24 NF ZINC			
10	01067	TINE MOTOR MOUNT & LH SIDE PLATE			
11	05052	HH CAP SCREW, 5/16-24 NF X 3/4 G5 ZINC			
12	03040-04	DECAL, "GREASE DAILY"			
13	05282	PIPE NIPPLE, 1/8" X 5 LONG			
14	05204	PIPE COUPLER, 1/8"			
15	05256	GREASE ZERK, 1/8 NPT			
16	05607	SNAP RING, SH-156, 1-9/16" EXTERNAL			
17	03001	O-RING, 2-152, 3-7/16 OD X 3/32 SECTION			
18	04605-F	TINE MOTOR			
19	05585	SH CAP SCREW, 1/2-13 NC X 1-1/4 G5 ZINC			
20	03926	O-RING, 2-112N90, 11/16 OD X 3/32 SECTION			
21	05603	SNAP RING, HO-315, 3-5/32 INTERNAL			
22	03943	BALL BEARING, SKF 6208			
23	05056	HH CAP SCREW, 3/8-24 NF X 1 G5 ZINC			
24	02065	MANIFOLD, TINE MOTOR			
25	05572	SH CAP SCREW, 5/16-18 NC X 1 G5 ZINC			
26	04520	FITTING, 6400-8-8			
27	03302	FITTING, 6409-6 PLUG			
28	05072	NUT, NYLOCK, 3/8-24 NF ZINC			
29	10702	TORQUE TUBE, 17" BOLT ON			
30	05046	NUT, GRIPCO, 1/2-13 NC G5 ZINC			
31	05067	HH CAP SCREW, 1/2-13 NC X 1 G5 ZINC			
32	10067	TINE COVER, 916			
33	03341-22	DECAL, "TILLER OPERATING INSTRUCTIONS"			
34	03341-23	DECAL, "TILLER SAFETY INSTRUCTIONS"			
35	05092	HH CAP SCREW, 3/8-16 NC X 1-1/2 G5 ZINC			
36	05073	NUT, NYLOCK, 3/8-16 NC ZINC			
37	01099	HANDLE, DEPTH BAR			
38	03018	GRIP, 1/8 X 3/4 X 2-3/4			
39	03080	SPRING			
40	01018	PIN, DEPTH BAR			
41	03065	HAIR SPRING COTTER #4			
42	03040-02	DECAL, "BARRETO", 3-1/2 X 11-1/4			
43	03040-01	DECAL, "MADE IN USA"			
44	03040-08	DECAL, "WARNING" (YELLOW)			
45	03040-03	DECAL, "CAUTION" (BLACK & WHITE)			
46	03040-07	DECAL, "CAUTION" (YELLOW)			
47	04340	DECAL, "916"			



- ① FOR 918, USE PART NO. 10706 (TORQUE TUBE, 19")
- ② FOR 918, USE PART NO. 01066 (TINE COVER, 918)
- ③ FOR 918, USE PART NO. 03040-51 (DECAL, "918")
- ④ FOR 918, USE PART NO. 11281 (TINE SHAFT, 918)
- ⑤ PART NO. 05063-24 IS A SET OF 24 PIECES.
- ⑥ PART NO. 03196-12 IS A SET OF 12 PIECES.
- ⑦ PART NO. 05074-24 IS A SET OF 24 PIECES.
- ⑧ REFERENCE DWG. 10144 FOR INDIVIDUAL PARTS.

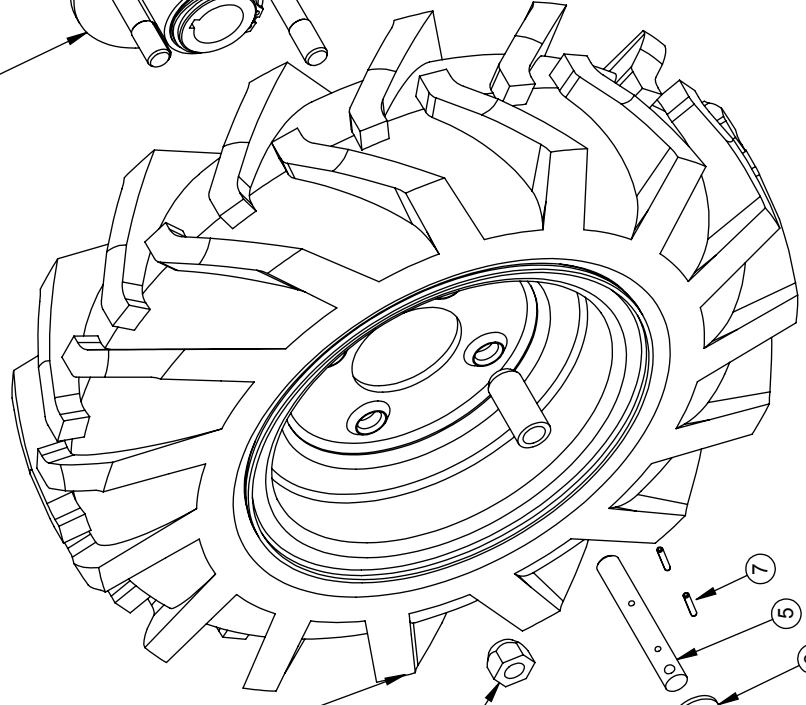
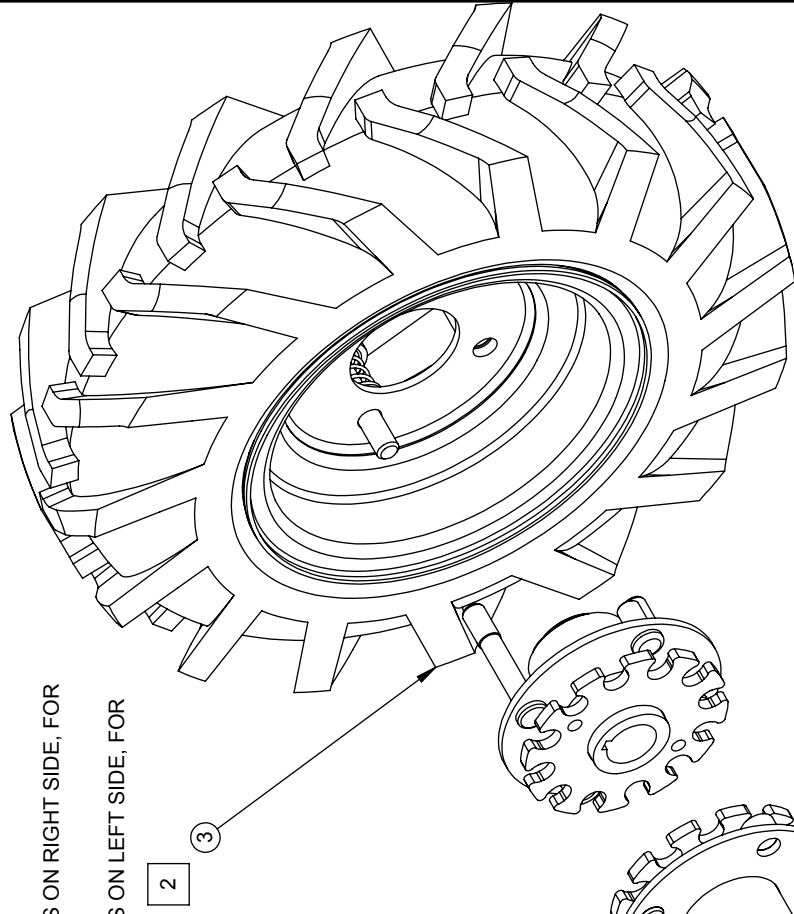
BARRETO

TITLE: TINE SECTION
 16" OR 18" DIGGING WIDTH
 PRODUCT LINE: 916 & 918 TILLER DATE: 4/26/07
 SCALE: 1:9.2
 SHEET 1 OF 1
 DWG# 00253 R2

REF QTY.	PART NO.	DESCRIPTION
1	02269-HUB	WHEEL HUB ASSY, 1-1/8" BORE
2	1	03190-FW TIRE & RIM, 16" X 4", LEFT HAND
3	1	03191-FW TIRE & RIM, 16" X 4", RIGHT HAND
4	6	05042 NUT, LUG, 1/2-20 NF
5	2	02068 PIN, FREE WHEELING
6	2	05102 WASHER, 1/2 SAE ZINC HARDENED
7	4	05548 ROLL PIN (SLOTTED SPRING), 1/8 X 3/4 ZINC
8	2	03352 SPRING, CENTURY 3385
9	4	02083 SPACER, WHEEL
10	2	01077 MOUNTING PLATE, PIN, FREE WHEELING
11	2	03550 SPLIT RING-27

1 FOR TRENCHER, 03190-FW IS ON RIGHT SIDE, FOR TRENCHING IN REVERSE

2 FOR TRENCHER, 03191-FW IS ON LEFT SIDE, FOR TRENCHING IN REVERSE



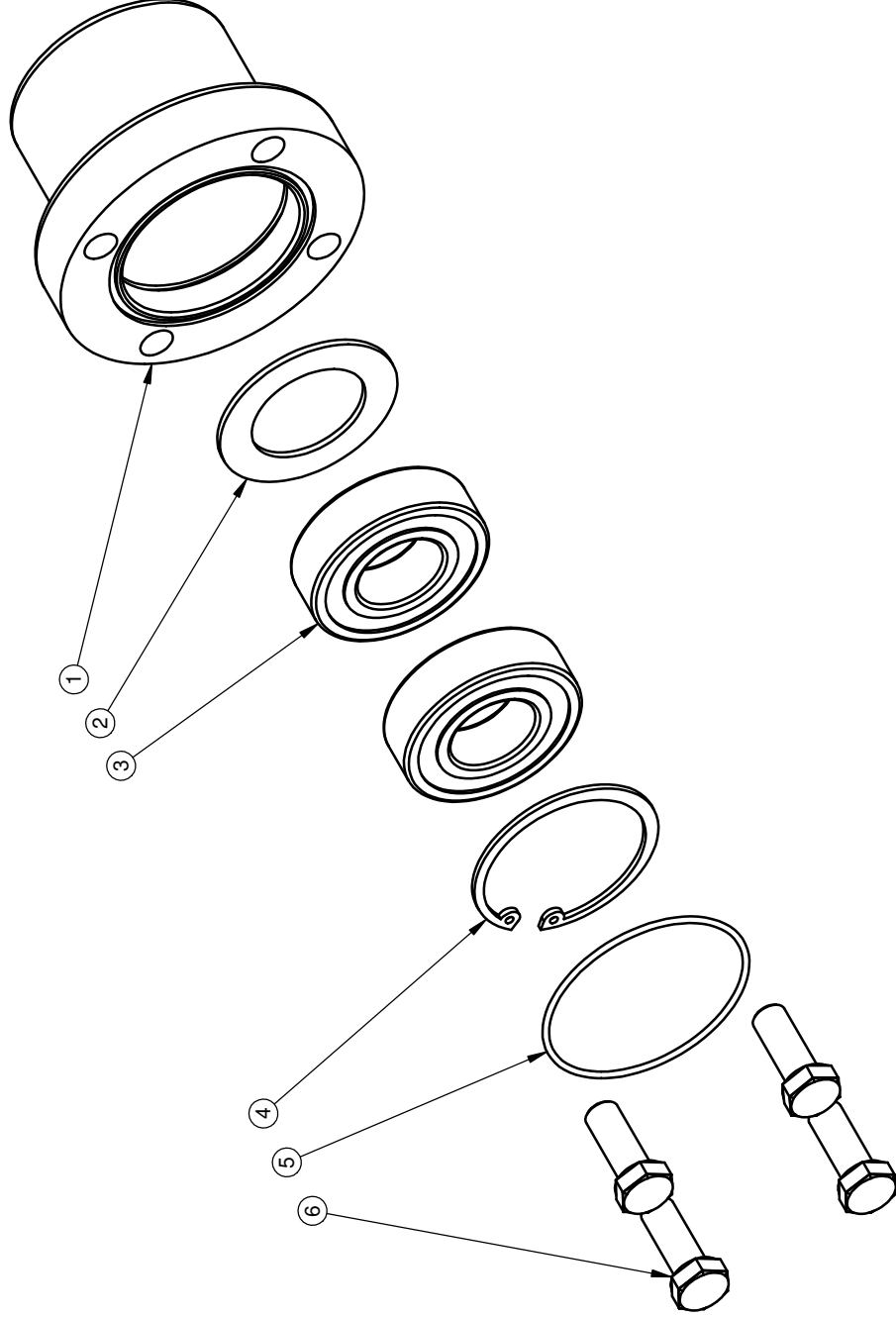
NOTES:

1. RIM ALONE IS PART NO. 03712.
TIRE ALONE IS PART NO. 03193.
2. USAGE: 1 OF 00256 R1 PER 912, 916 & 918.

BARRETO

TITLE: FREE WHEELING HUBS AND WHEELS
 PRODUCT LINE: COMMON
 SCALE: 1:4
 SHEET 1 OF 1
 DATE: 7/16/07
 DWG# 00256 R1

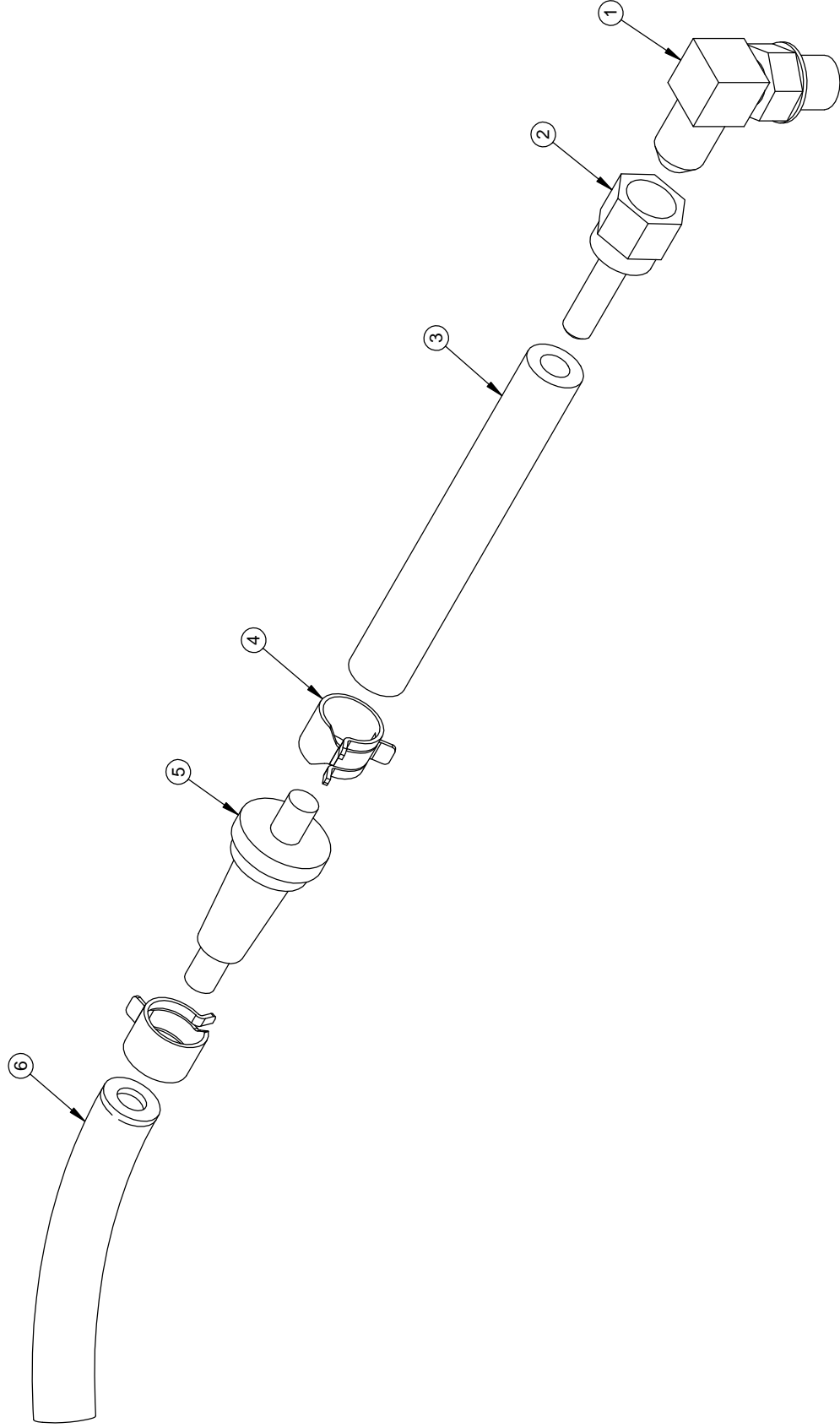
REF	QTY.	PART NO.	DESCRIPTION
1	1	10142	OUTBOARD BEARING HOUSING, 4 BOLT
2	1	01026	SHIELD, OUTBOARD BEARING
3	2	03043	BALL BEARING, 6205
4	1	05024	SNAP RING, HO-200, 2" INTERNAL
5	1	03904	O-RING, 2-035, 2-3/8 OD X 1/16 SECTION
6	4	05059	HH CAP SCREW, 3/8-16 NC X 1 G5 ZINC



BARRETO

TITLE: OUTBOARD BEARING ASSEMBLY,
4 BOLT
PRODUCT LINE: COMMON DATE: 3/2/04
SCALE: 1:2 DWG# 10144
SHEET 1 OF 1

REF. QTY.	PART NO.	DESCRIPTION
1	04555	FITTING, 6801-4-4
2	04214	FITTING, JS-4-4, HOSE BARB 1/4 X 1/4 SWIVEL
3	11348	HOSE, 1/4 INCH GASOLINE, 4L5, 3-1/2" LONG
4	03062-06	CLAMP, 1/4" FUEL LINE
5	04516	BREATHER, FILTER SNAPPER 1435
6	11347	HOSE, 1/4 INCH GASOLINE, 4L5, 3-1/4" LONG



TITLE: BREATHER HOSE ASSEMBLY

PRODUCT LINE: 916 DATE: 4/26/07

SCALE: 1:1.3

DWG# 10189 R2

BARRETO

HOSES, 916 TILLER

QTY.	PART NO.	DESCRIPTION
1	10204	HOSE, PUMP TO ACTUATOR TEE FITTING
1	10205	HOSE, CONTROL VALVE TO ACTUATOR TEE FITTING
1	10206	HOSE, CONTROL VALVE TO OIL FILTER MOUNT
1	10207	HOSE, CONTROL VALVE TO WHEEL DRIVE MOTOR FRONT PORT
1	10208	HOSE, CONTROL VALVE TO WHEEL DRIVE MOTOR REAR PORT
1	10209	HOSE, CONTROL VALVE TO TINE MOTOR FRONT PORT
1	10210	HOSE, CONTROL VALVE TO TINE MOTOR REAR PORT